

## Alien Nations Checklist



Lisa Alonzo - Waste/Repetition  
Acrylic and molding paste piped on panel, 2016  
55 x 46 x 3 inches

Lisa Alonzo  
*Waste/Repetition*, 2016  
acrylic and molding paste piped on panel  
55 x 46 x 3 inches  
Courtesy of Claire Oliver Gallery

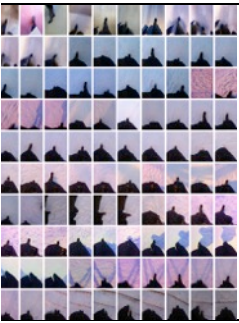


Lisa Alonzo - Repetition/Waste  
Acrylic and molding paste piped on panel, 2016  
55 x 46 x 3 inches

Lisa Alonzo  
*Repetition/Waste*, 2016  
acrylic and molding paste piped on panel  
55 x 46 x 3 inches  
Courtesy of Claire Oliver Gallery



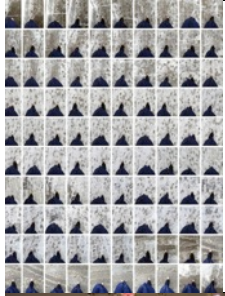
Hernan Bas  
*All By Myself*, 2004  
single-channel video projection, b/w, silent  
duration: 1 minute, 30 seconds  
Edition of 10, AP 1/2  
Courtesy of Lehmann Maupin Gallery



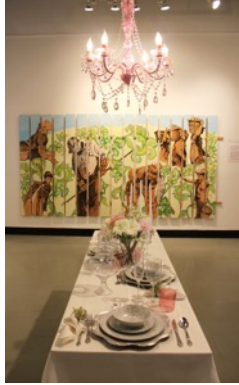
Suzette Bross  
*Walk 1/20/13*  
*Snowstorm, Tuileries Garden, Paris*, 2014  
(5:35:21-5:56:46pm)  
Photograph, 45 x 34 inches  
Courtesy of Geary Contemporary



Suzette Bross  
*Walk 3/12/14 Stud Horse Point, Utah*, 2014  
(2:41:16-3:12:34pm)  
Photograph, 45 x 34 inches  
Courtesy of Geary Contemporary



Suzette Bross  
*Walk 2/5/14 Astor Street, Snowstorm, Chicago, 2014*  
(9:11:40-9:12:38am)  
Photograph, 45 x 34 inches  
Courtesy of Geary Contemporary



Patricia Cazorla and Nancy Saleme  
*DeFence, 2010*  
Charcoal pencil, ink, permanent markers, liquid silver leaf and acrylic on hand-made wooden fence  
72 x 144 x 3 inches  
  
*DeFence: The Installation, 2015*  
Hand-written table settings objects (glass, ceramic and aluminum), chandelier and table  
size variable /78 <sup>3</sup>/<sub>4</sub> x 23 <sup>5</sup>/<sub>8</sub> x 27 <sup>1</sup>/<sub>2</sub> inches (table)  
Collection of the artists



Jesse Chun  
*Landscape #10, 2014*  
pigment print  
30 x 60 inches, edition of 3  
Courtesy of the artist



Jesse Chun  
*Landscape #8, 2014*  
pigment print  
20 x 30 inches, edition of 7  
Courtesy of the artist



Jesse Chun  
*Landscape #15, 2013*  
pigment print  
51 x 40 inches, edition of 3  
Courtesy of the artist



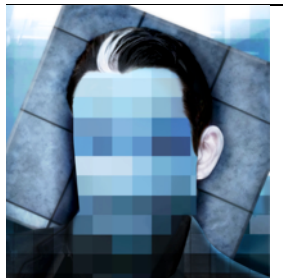
Jesse Chun  
*Blueprints #1 - 25*  
*(Grid View)*, 2016  
23 Layered pigment prints on blueprint vellum paper  
11 x 8 1/2 inches each  
Edition 1/3  
Courtesy of the artist



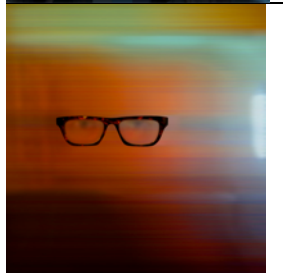
Richard Deon  
*The Quick Response Squadron (sortie formation)*, 2017  
Coroplast, Signfoam, acrylic, vinyl graphic applique,  
aluminum rod, 26 x 96 x 162 inches, 43 lbs. per glider  
4 total  
Courtesy of the artist



Lalla Essaydi,  
*Bullets Revisited #26*, 2014  
triptych which is three panels 24 x 20 inches each  
Courtesy of Edwynn Houk Gallery



Carla Gannis  
*Re(presented) Mar 25 [Block Head]*, 2012  
42 x 43 inches  
digital pigment print, edition of 5  
Courtesy of the artist



Carla Gannis  
*Re(presented) Oct 09 [Tortoise Shell Glasses]*, 2012  
42 x 43 inches  
digital pigment print, edition of 5  
Courtesy of the artist



Carla Gannis  
*Re(presented) Nov 23 [Orange and Yellow]*, 2012,  
42 x 43 inches  
digital pigment print, edition of 5  
Courtesy of the artist



Carla Gannis  
*Re(presented) Nov 27 [Smart Phone], 2012*  
12 x 12.25 inches  
digital pigment print, edition of 5  
Courtesy of the artist



Carla Gannis  
*Re(presented) May 06 [Doppelganger], 2012*  
12 x 12.25 inches  
digital pigment print, edition of 5  
Courtesy of the artist



Carla Gannis  
*Re(presented) Jan 24 [Headphones Version 2], 2011*  
12 x 12.25 inches  
digital pigment print, edition of 5  
Courtesy of the artist



Scherezade Garcia  
*Theories of Freedom: Golden Landscape, 2010-2017*  
inner tubes in a variety of sizes, dipped in gold  
paint(sprayed), blue acrylic, safety ties and airport tags  
Courtesy of the artist



Katy Grannan  
*Anonymous, Los Angeles, 2008, 2010*  
archival pigment print on cotton rag paper  
mounted to Plexiglas  
26 1/2 x 19 inches  
Edition 3 of 3  
Courtesy of Salon 94



Katy Grannan  
*Anonymous, Modesto, CA, 2012, 2012*  
archival pigment print on cotton rag paper  
mounted to Plexiglas  
39 x 29 inches  
Edition 2 of 3, 1  
Courtesy of Salon 94



Mona Hatoum  
*Over My Dead Body, 2005*  
heliogravure  
MOH-05-PR-005  
27 x 39 1/4 inches  
edition of XXXV  
Courtesy of Alexander and Bonin

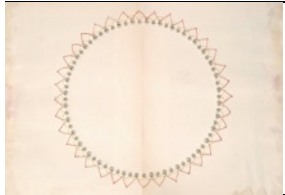

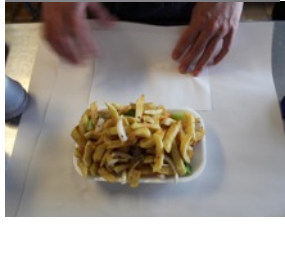





Meg Hitchcock  
*Prayer Cloth No. 3: Prayer for the State of Israel, 2016,*  
letters cut from the Koran  
22 1/2 x 17 1/2 inches  
Courtesy of the Artist



Meg Hitchcock  
*Prayer Cloth No. 2: A Prayer to Yamantaka, 2016*  
letters cut from the Bible, 30 x 22 1/4 inches  
Courtesy of the Artist



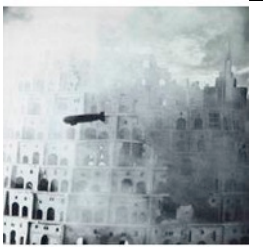
	<p>Meg Hitchcock  <i>Red Lotus Mantra</i>, 2016  letters cut from Bible, threads from Tibetan prayer flags,  pages torn from Bible, 9 1/2 x 12 1/2 inches  Courtesy of the Artist</p>
	<p>Meg Hitchcock  <i>61 Mantras</i>, 2016  letters cut from Bible, threads from Tibetan prayer flags,  14 x 18 inches  Courtesy of the Artist</p>
	<p>Alison Kuo  <i>Chinese Chippy</i>, 2017  performance with salt and pepper chips, 2017  Gallery performance March 23, 2017  Courtesy of the artist</p>
	<p>Alison Kuo  <i>Take Outtake</i>, 2017  digital video  Courtesy of the artist</p>
	<p>Cecilia Mandrile  <i>One Other (The Desert Inside)</i>, 2007-2014  soft sculpture, screen-print transferred image onto plate,  handmade carrying bag  65 x 32 x 14 inches  Collection of the artist</p>
	<p>Cecilia Mandrile  <i>Silence Between Hands (El silencio en las manos)</i>, 2000-2013  13 x 15 x 12 inches  suitcase with doll: soft sculpture, suitcases, breathing  machine  Installation dimensions variable  Collection of the artist</p>



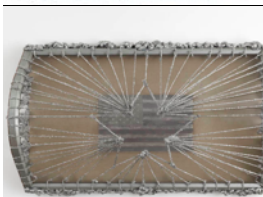
Lothar Osterburg  
*City of Towers*, 2015  
gum print on arches watercolor paper, mounted  
40 x 30 inches  
Courtesy of Lesley Heller Workspace



Lothar Osterburg  
*Return to the Tower*, 2015  
photogravure on Somerset White  
34 x 28 ½ inches  
Edition of 8  
Courtesy of Lesley Heller Workspace



Lothar Osterburg  
*The Tower: In the Clouds*, 2015  
photogravure on Somerset White  
16 x 15 inches  
Edition of 12  
Courtesy of Lesley Heller Workspace



Nari Ward  
*Great Reburn*, 2012  
plexiglass, aluminum, linen, flag ash, gesso, and aluminet  
shade cloth  
40 x 64 x 17 inches  
Courtesy Lehmann Maupin Gallery



Nari Ward  
*Angelic Troublemakers*, 2016  
shoelaces  
108 x 163 x 3 ½ inches  
Courtesy Lehmann Maupin Gallery



Tricia Wright  
*Late Mirror Stage, Patch of Light*, 2013  
acrylic on canvas  
48 x 36 inches  
Collection of the artist



Tricia Wright  
*Late Mirror Stage, Lamp Shadow*, 2013  
acrylic on canvas  
48 x 36 inches  
Collection of the artist



Tricia Wright  
*Late Mirror Stage, Patch of Light II*, 2013  
acrylic on canvas  
48 x 36 inches  
Collection of the artist