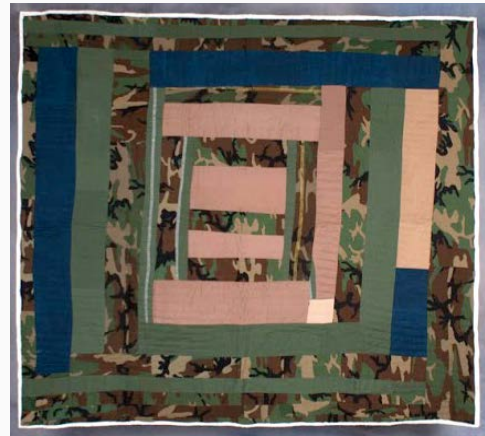


THE GEES BEND TRADITION

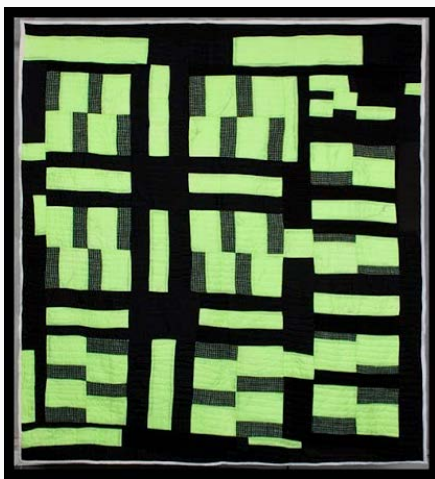
Checklist



Mary Lee Bendolph
Untitled, no date
Quilted fabric
75 x 75 inches
Courtesy of Linda Day Clark



Mary Lee Bendolph
Camo, 2005
Camo and Jeans
78 x 85 inches
Courtesy of Rubin Bendolph, Jr.



Mary Lee Bendolph
Q-Bar, 2003
Cotton
81 x 89 inches
Courtesy of Rubin Bendolph, Jr.



Mary Lee Bendolph
Hello, 2009
Cotton
85 x 82 inches
Courtesy of Rubin Bendolph, Jr.



Mary Lee Bendolph
Arrow, 2005
Cotton
79 x 84 inches
Courtesy of Rubin Bendolph, Jr.



Loretta Bennett
Broken Housetop, 2008
Quilted fabric
81 x 68 inches
Courtesy of Craig and Joan Martahus



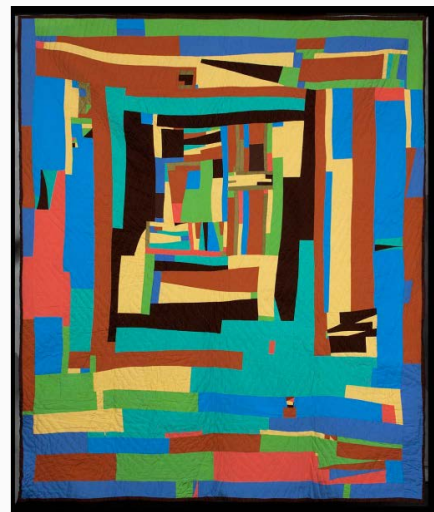
Loretta Bennett
Tank, 2004
Quilted fabric
75 x 60 inches
Courtesy of Greg Kucera Gallery, Seattle



Loretta Bennett
Wrapped in Denim, 2014
Quilted fabric
84 X 84 inches
Courtesy of Greg Kucera Gallery, Seattle



Loretta Bennett
Log Cabin with Cracks, 2014
Quilted fabric
84 X 84 inches
Courtesy of Greg Kucera Gallery, Seattle



Loretta Bennett
Flow Plans, 2012
Quilted fabric
76 x 89 inches



Leola Pettway
Star of Bethlehem with Satellite Stars Quilt, 1991
Cotton and synthetics
102 x 93 1/2 inches

Courtesy of the American Folk Art Museum, New York Museum purchase made possible in part by a grant from the National Endowment for the Arts, with matching funds from the Great American Quilt Festival 3, 1991.13.4



Leola Pettway
Star Variation Quilt, 1991
Cotton and synthetics
80 1/2 x 78 1/2 inches

Courtesy of the American Folk Art Museum, New York Museum purchase made possible in part by a grant from the National Endowment for the Arts, with matching funds from the Great American Quilt Festival 3, 1991.13.3



Qunnie Pettway
Four House Top Blocks, 2004
Quilted fabric
90 x 72 inches
Courtesy of Greg Kucera Gallery, Seattle



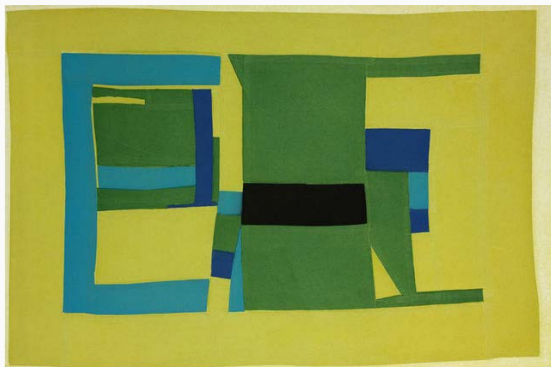
Tinnie Dell Pettway
Gee's Bend Tradition, 2009
Quilted fabric
79 x 82 inches
Courtesy of That's Sew Gee's Bend



Mary Lee Bendolph
Get Ready, 2006
Softground aquatint
36 x 43 inches
Edition # 35/50
Courtesy of Paulson Bott Press



Mary Lee Bendolph
Black and Brown, 2005
Color aquatint etching
33 x 30 1/2 inches
Edition # 45/50
Courtesy of Paulson Bott Press



Louisiana Bendolph
History, 2007
Softground aquatint
27 3/4 x 34 1/2 inches
Edition # 17/50
Courtesy of Paulson Bott Press



Louisiana Bendolph
American Housetop (For the Arnetts), 2005
Color aquatint etching
45 1/2 x 38 inches
Edition # 31/50
Courtesy of Paulson Bott Press



Loretta Bennett
No Way, No Way, 2006
Softground spitbite aquatint etching
29 1/2 x 36 inches
Edition # 26/50
Courtesy of Paulson Bott Press



Loretta Bennett
Blues, 2007
Softground spitbite aquatint etching
42 3/4 x 31 inches



Loretta Pettway
Lazy Gal, 2006
Softground spitbite aquatint and hardground etching
39 1/2 x 33 inches
Edition # 14/50
Courtesy of Paulson Bott Press



Loretta Pettway
Old Beauty, 2006
Softground spitbite aquatint etching
28 x 24 3/4 inches
Edition # 28/50
Courtesy of Paulson Bott Press

**The Gee's Bend Tradition – Photographs by Arthur Rothstein and Marion Post Wolcott
Farm Security Administration/Office of War Information – Library of Congress, Prints and Photographs Division**



Arthur Rothstein
Girl at Gee's Bend (Artelia Bendolph) April, 1937
Digital file from original nitrate negative
Library of Congress, Prints and Photographs Division



Arthur Rothstein
Sewing a Quilt
(Lucy Mooney and granddaughters Lucy P. Pettway and Bertha Pettway) April, 1937
Digital file from original nitrate negative
Library of Congress, Prints and Photographs Division



Arthur Rothstein
Former Home of the Pettways, April, 1937
Digital file from original nitrate negative
Library of Congress, Prints and Photographs Division



Arthur Rothstein
Lucy, former cook for the Pettways. Gee's Bend, Alabama, April, 1937
Digital file from original nitrate negative
Library of Congress, Prints and Photographs Division

Arthur Rothstein
Untitled (Gee's Bend, Alabama), February, 1937
Digital file from original nitrate negative
Library of Congress, Prints and Photographs Division



Arthur Rothstein
Going to School. Gee's Bend, Alabama, April, 1937
Digital file from original nitrate negative
Library of Congress, Prints and Photographs Division



Arthur Rothstein
Carrying Water (Annie Pettway Randolph). Gee's Bend, Alabama, April, 1937
Digital file from original nitrate negative
Library of Congress, Prints and Photographs Division



Marion Post Wolcott
Old Cable Ferry between Camden and Gee's Bend, Alabama, May, 1939
Digital file from original nitrate negative
Library of Congress, Prints and Photographs Division



Marion Post Wolcott
Supervised Games. Gee's Bend, Alabama, May, 1939
Digital file from original nitrate negative
Library of Congress, Prints and Photographs Division

