

## New York Fiber in the 21st Century

### Gema Alava



*Here and There A/P*, 2011  
white and black thread and pins  
site specific installation, 240" x 28" and 90" x 26"  
Courtesy of the artist



Gema Alava will perform a series of three interventions on her installation during gallery visiting hours. Her performances will not be announced. In this way, chance and serendipity decide who her audience is, and who might be aware or unaware of her performances as they are taking place. For each performance, Alava will reconstruct an installation, which appears to be cut in half. Sound artist-composer Roberto Lange will collaborate by recording the sounds of her three interventions.

### Blanka Amezkua



*Kitrino*, 2009  
cotton fabric, crochet, abstract embroidery over pre-existing



*Portokali*, 2009  
cotton fabric, crochet, abstract embroidery over pre-existing

grape embroidered motif  
20" x 21"  
Courtesy of the artist

grape embroidered motif  
20" x 21"  
Courtesy of the artist

### **Xenobia Bailey**



*Static Station*, 2003  
hand crochet, cotton and acrylic 4 ply yarn  
86" x 72"  
Courtesy of the artist

### **Erika Baker**



*Gothic Coat*, 2010  
knitting, weaving  
96" x 120"  
Courtesy of the artist

### **Michael Cummings**



*Mecklenburg, North Carolina Cotton Picking Time, 2008*  
quilt  
96" x 120"  
Courtesy of the artist

### Lisa Curran



*Spores and Chain, 2010*  
knitted and felted wool yarns and roving  
96" x 144" x 48"  
Courtesy of the artist



detail

### Margaret Cusack

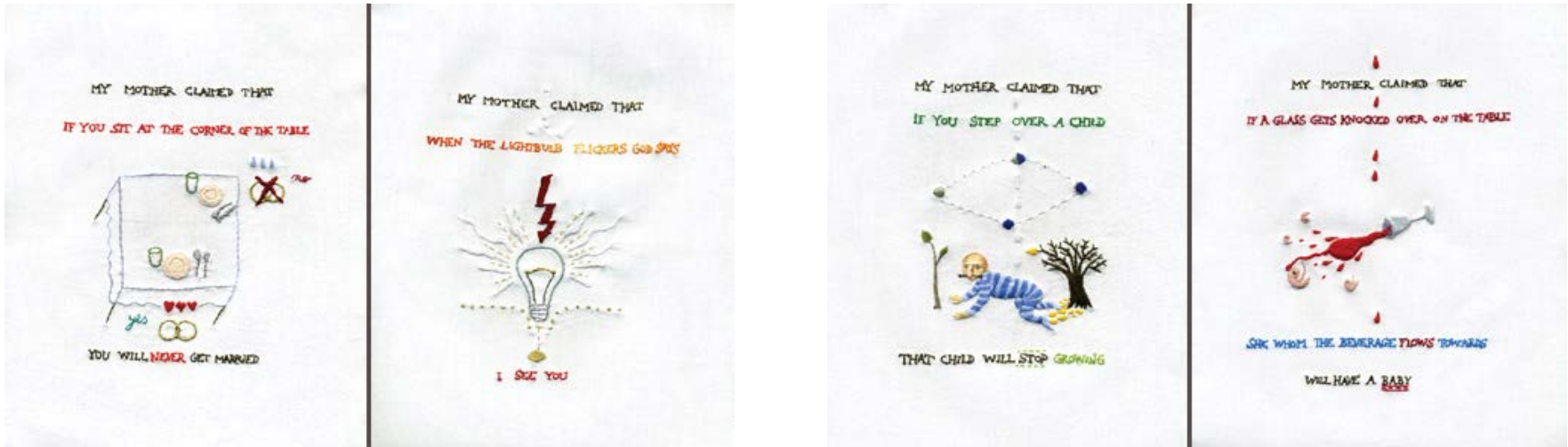


*Nelson Mandela*, 2008  
 machine stitched appliqué  
 13.5" x 11.5"  
 Courtesy of the artist



*Levees Pillow*, 2006  
 hand-stitched embroidery  
 15" x 12" x 4"  
 Courtesy of the artist

**Andrea Dezsö**



Titles from left to right:  
*My Mother Claimed That When The Light Bulb Flickers God Says I See You.*  
*My Mother Claimed That If You Sit At The Corner Of The Table You Will Never Get Married.*  
*My Mother Claimed That If You Step Over A Child That Child Will Stop Growing.*  
*My Mother Claimed That If A Glass Gets Knocked Over The Table She Whom The Beverage Flows Towards Will Have A Baby.*  
 cotton and metallic thread embroidery on fabric  
 2009  
 10" x 8" each  
 Courtesy of the artist and Frey Norris Contemporary & Modern

**Marilyn Henrion**



*Rift*, 2008  
cotton, linen, hand hooked  
38" x 24"  
Courtesy of the artist



*Strata*, 2008  
cotton, linen, hand hooked  
38" x 24"  
Courtesy of the artist



*Meditations 1, 2, 3, 4*, 2008  
cotton, linen, hand hooked  
21" x 21" each  
Courtesy of the artist

## Ai Kijima



*Hello*, 2010  
bed sheets, pillow cases, blankets, dresses, and aprons  
53" x 100"  
Courtesy of the artist

## Katherine Knauer



*Flying Goose*, 2003  
quilt  
86" x 86"  
Courtesy of the artist

**Nancy Koenigsberg**



*Light*, 2010  
coated copper wire  
40" x 40" x 7"  
Courtesy of the artist



*Tempest*, 2010  
coated copper wire  
40" x 40" x 7"  
Courtesy of the artist

**Carole P. Kunstadt**



*Sacred Poem XXIII*, 2006  
tissue, paper:  
pages from parish psalmody dated 1844  
6" x 7.75" x 1.75"  
Courtesy of the artist



*Sacred Poem XIII*, 2007  
tissue, thread, paper:  
pages from parish psalmody dated 1844  
6.75" x 4.5" x 2"  
Courtesy of the artist



*Sacred Poem XLV*, 2007  
gold leaf, thread, paper:  
pages from parish psalmody dated 1844  
7.5" x 4" x 1.25"  
Courtesy of the artist

### Aristides Logothetis



*Tripping*, 2011  
plastic, fabric, foam, metal and leather  
54" x 25" x 20"  
Courtesy of the artist

### Patricia Malarcher



*Cloth of Honor*, 2007  
fabric, Mylar, paint, transfer prints  
60" x 54"  
Courtesy of the artist



detail

## Ruth Marshall



*#5 Ocelot*, 2010  
yarn, strings, sticks, hand knitted textile  
Interpretation of ocelot based on study of actual pelt at  
American Museum of Natural History (male collected from Peru 1930).  
53" x 32"  
Courtesy of the artist

## Dindga McCannon





*The Magic of the Margule*, 2009  
mixed media  
45" x 34"  
Courtesy of the artist

**Norma Minkowitz**



*Hybrid*, 2010  
mixed media  
33" x 18" x 13"  
Courtesy of the artist



*King of the Hill*, 2000  
mixed media  
36" 18" x 11"  
Courtesy the artist and Brown/Grotta Arts

**Leslie Pelino**



*Jelly Squid*, 2009  
mixed media  
50" x 29"  
Courtesy of the artist



*Greeting the Morning*, 2009  
mixed media  
70" x 32"  
Courtesy of the artist

## Don Porcella



*There You Remain in the Drain of the Mainframe Food Chain*, 2008-2010  
pipe cleaners  
96" x 96" x 96"  
Courtesy of the artist and Claire Oliver Gallery



## Lina Puerta



*Arbol (Tree)*, 2007  
fabric, metal, lights, sandbags, fiberfill and wooden stool  
120" x 48" x 48"  
Courtesy of the artist



*Arbol (Tree)*, detail



*Island of Langerhans*, 2011  
clay, glaze, fabric, rhinestones, appliqué, polyurethane foam,  
glue, modeling tress, paint and artificial plants  
11" x 13.5" x 11"  
Courtesy of the artist

### Lacey Jane Roberts



*Super Butch Knitting Needles*, 2003  
brass, copper, assorted hardware  
18" x 7"  
Courtesy of the artist



detail

### Larry Schulte

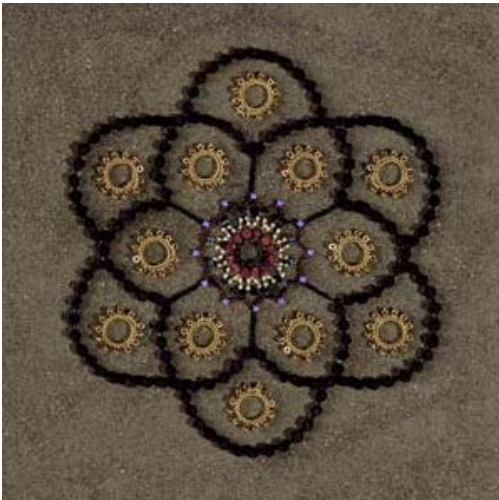


*Yellow Line*, 2010  
woven painted Paper  
54" x 54"  
Courtesy of the artist



*Red Field*, 2010  
woven painted paper  
54" x 54"  
Courtesy of the artist

## Donna Sharrett



*Box of Rain*, 2003  
rose beads, guitar string ball ends, beads, synthetic hair, and  
rings, sewn to a dirt base  
12" x 12"  
Courtesy of the artist and Pavel Zoubok Gallery



*Wild Horses*, 2003  
rose beads, guitar string ball ends, beads, synthetic hair, and  
rings, sewn to a dirt base  
12" x 12"  
Courtesy of the artist and Pavel Zoubok Gallery

## Ann Shostrom



*Wheatfield*, 2009  
linen, jute, dye, bleach, threads  
86" x 58"  
Courtesy of the artist and Elizabeth Harris Gallery

### **John Sims**



*Seeing Pi*, 2005  
fabric/cotton  
96" x 96"  
Courtesy of the artist

### **Vered Sivan**



*Plasma*, 2011  
performance installation  
size variable  
Courtesy of the artist

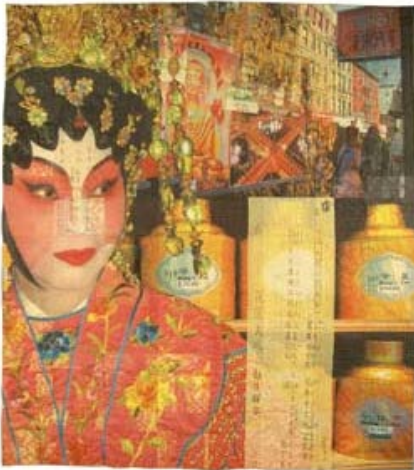


detail



detail

### **Arlé Sklar-Weinstein**



*Mott Street Opera*, 2010-11  
photomontage on cotton  
64"x 58"  
Courtesy of the Artist and Blue Door Gallery

### **Ludmila Uspenskaya**



*Recharge*, 2003  
silk and cotton fabric hand painted by artist, wax resist, collage;  
machine and hand quilted  
74" x 56"  
Courtesy of the artist

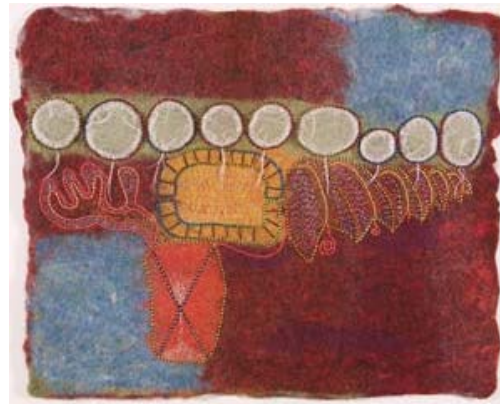


*Hot and Sunny*, 2003  
silk and cotton fabric hand painted by artist, wax resist,  
collage; machine and hand quilted  
93 " x 57"  
Courtesy of the artist

### Erma Martin Yost



*Winter Cradle*, 2004  
hand felted wool, stitched construction  
17" x 20" x 2"  
Courtesy of the artist



*Germination*, 2007  
hand felted wool, stitched construction  
19" x 22" x 2"  
Courtesy of the artist



*Pod Field*, 2007  
hand felted wool, stitched construction  
20" x 23" x 2"  
Courtesy of the artist

