

# THE CRAFT

Curated by Melissa Brown

September 21 - December 16, 2010

[Introduction](#)

[Home](#)

**CHECKLIST** [to print use Safari]

Andy Coolquitt

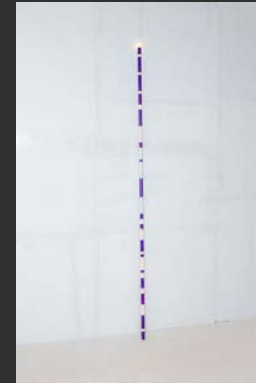


*(Samuel Gompers)*, 2010  
Metal, wire, epoxy, light bulb  
40" x 40" x 40"  
Courtesy of the artist and Lisa Cooley



*BB*, 2008  
Ceramic, acrylic, epoxy, found lighters

Courtesy of the artist and Lisa Cooley



*ACDB5BPAC*, 2010  
Metal, wire, epoxy, light bulb  
107" x 2" x 2"  
Courtesy of the artist and Lisa Cooley

Jim Drain



*Untitled (Michael Jackson Sweater)*, 2009  
Knit sweater  
size variable  
Courtesy of the artist and Greene Naftali Gallery, NY

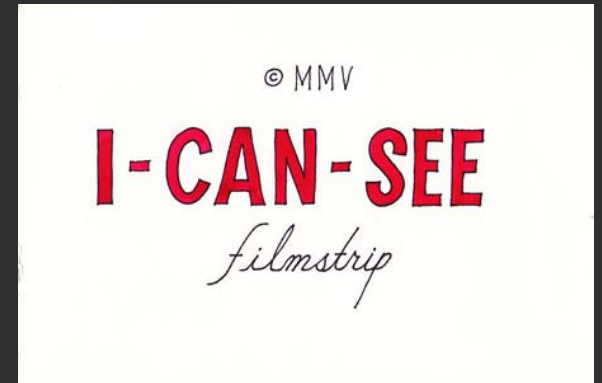
Brian Dewan



*Focus*, 2007  
Ink on watercolor on paper  
30" x 40"  
Courtesy of the artist and Pierogi INC



*Focus*, 2007  
Ink on watercolor on paper  
30" x 40"  
Courtesy of the artist and Pierogi INC



*I-CAN SEE filmstrip*, 2007  
Ink on watercolor on paper  
30" x 40"  
Courtesy of the artist and Pierogi INC

Carla Edwards



*Shades of Ambivalence*, 2009  
American Flags and Nylon Dye  
96" x 96"  
Courtesy of the artist

Josh Faught

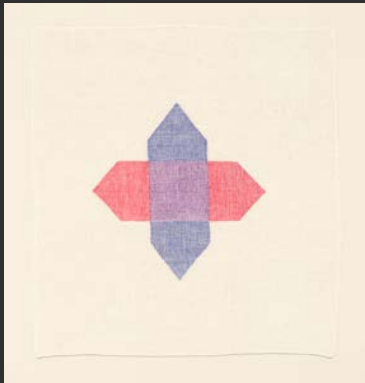


*PFLAG pangram*, 2010  
Embroidered pageantry sash, indigo, silk handkerchief, screenprints on cotton, gold lettered stickers, hemp, spray paint, pin, and toilet paper  
60" x 72"  
Courtesy of the artist and Lisa Cooley Fine Art

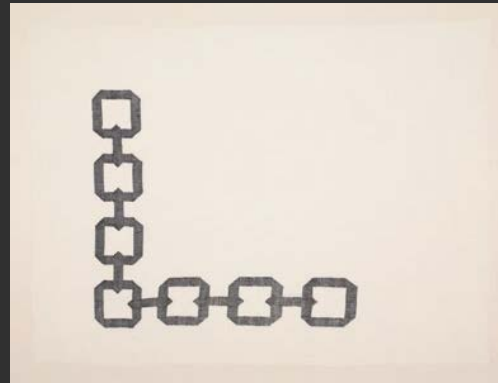


detail

Ruth Laskey



*Twill Series (Chinese Red/Orchid Blue)*, 2007  
Hand Dyed and hand woven linen  
19.75" x 18.25"  
Courtesy of Nancy Delman Portnoy



*Twill Series (Black 3)*, 2008  
Hand Dyed and hand woven linen  
28" x 37.5"  
Courtesy of Anthony and Linda Grant, New York



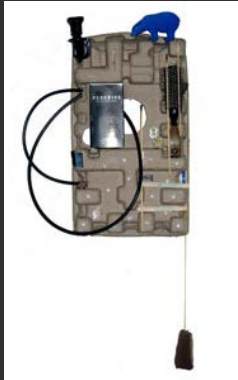
*Twill Series Black Cherry/Amethyst/Fire Red*, 2007  
Hand Dyed and hand woven linen  
19.75" x 18.25"  
Courtesy of Joel Wachs

Marie Lorenz



*I am half sick of Shadows*, 2006  
Plywood Fiberglass  
18" x 20" x 168"  
Courtesy of the artist

Michael Mahalchick



*Perceive*, 2010  
Mixed media  
16" x 33"  
Courtesy of the artist and CANADA



*Doppelganger*, 2010  
Mixed media  
4" x 31"  
Courtesy of the artist and CANADA



*Luminate*, 2010  
Mixed media  
24" x 28"  
Courtesy of the artist and CANADA

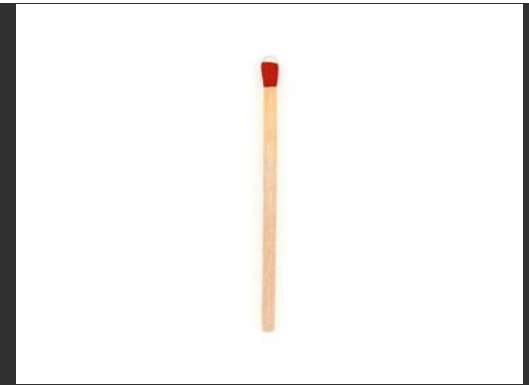
Zoe Sheehan Saldaña



*Life Jackets*, 2008-09  
Coated and heat-sealed nylon, polyester webbing, thread, buckle, reflective tape, safety whistle, milkweed fluff  
Adult size 24" x 18" x 5"; child size 16" x 13" x 3.5"  
Edition Adult 14 plus one AP; child size 6 plus one AP  
Courtesy of the artist



*Ball of Twine*, 2009  
Homespun hemp fiber (~50 yards)  
3" x 2.5" x 2.5"  
Open edition  
Courtesy of the artist

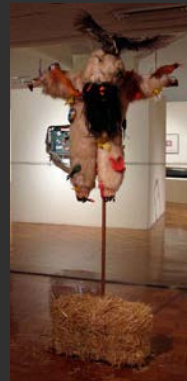


*Strike Anywhere*, 2007-08  
Aspen wood, wax, gelatin, pigment, ground glass, chemicals  
2.25" x 0.125" x 0.125"  
Courtesy of the artist

Jocelyn Shipley



*Nightmare Catcher*, 2009-10  
Tape, string, latex, and feathers  
26" x 26" x 2"  
Courtesy of the artist



*Scary, Scared Scarecrow*, 2009-10  
Kitty costume, mask, hay, birds and blood  
72" x 36" x 12"  
Courtesy of the artist

Marc Swanson



*Psychic Studies II*, 2007  
Wood, mirrored acrylic, stain  
72" x 78"  
Courtesy of the artist

Siebren Versteeg



*32 Particle Board (vertical)*, 2008  
Archival inkjet print on DiBond  
95.5" x 47.75"  
Courtesy of the artist and Meulensteen Gallery