

**The Faculty Exhibition: Color**  
**August 31, 2019- October 5, 2019**  
**Reception: September, 4 2019.**



**James Adkins,**  
*Aegis*, 2019,  
26-inch  
diameter,  
patinated  
plaster.



**Nicole Barreras,** *El Cojuelo*,  
2019, 28 x  
36 inches,  
digital.



**John Belardo,**  
*Sacred Garden,*  
2018, 25 x 37  
x 37 inches,  
terra-cotta.



**Melissa Brown,**  
*Painting the Palisades,*  
2019, 59 x 78  
inches,  
flashe, acrylic  
and oil on  
dibond.

		<p><b>Paul Carrellas,</b> <i>Pesce</i>, 2019, 16 x 20 inches, oil on canvas.</p>
		<p><b>Paul Carrellas,</b> <i>Tree of Life</i>, 2017, 28 x 22, acrylic and oil on canvas.</p>



**Paul Carrellas,**  
*Wicked Wicker*, 2019,  
24 x 24  
inches,  
acrylic and  
oil on canvas.



**Paul Carrellas,**  
*Natural Selection*,  
2019, 24 x 18  
inches, oil on  
canvas.



**Shawn Cheng, *Te***  
*for Tengu,*  
2018, 12 x 12 inches,  
acrylic and ink on panel.



**Shawn Cheng, *Ho***  
*for Hososhi,*  
2018, 12 x 12 inches,  
acrylic and ink on panel.



**Shawn Cheng, *Hi***  
*for Hitotsume-Kozo*, 2016,  
12 x 12  
inches,  
acrylic and  
ink on panel.



**Shawn Cheng, *So***  
*for Son of Goku*, 2018,  
12 x 12  
inches,  
acrylic and  
ink on panel



**Gina Dominique,**  
*Pink Universe,*  
2019, 7 x 16'  
round  
paintings and  
painted  
geometrical  
architectural  
elements.



**Johnathan Ehrenberg,**  
*Monument,*  
1:03 minutes  
video, two-  
channel  
video.



**Katy Fisher,**  
*Collection*  
28, 2017, 28  
x 22 inches,  
gouache and  
cut paper on  
paper.



**Abigail  
Gunnels,**  
*Setting Up  
for  
Christmas,*  
2019, 24 x 24  
inches,  
archival  
inkjet print.

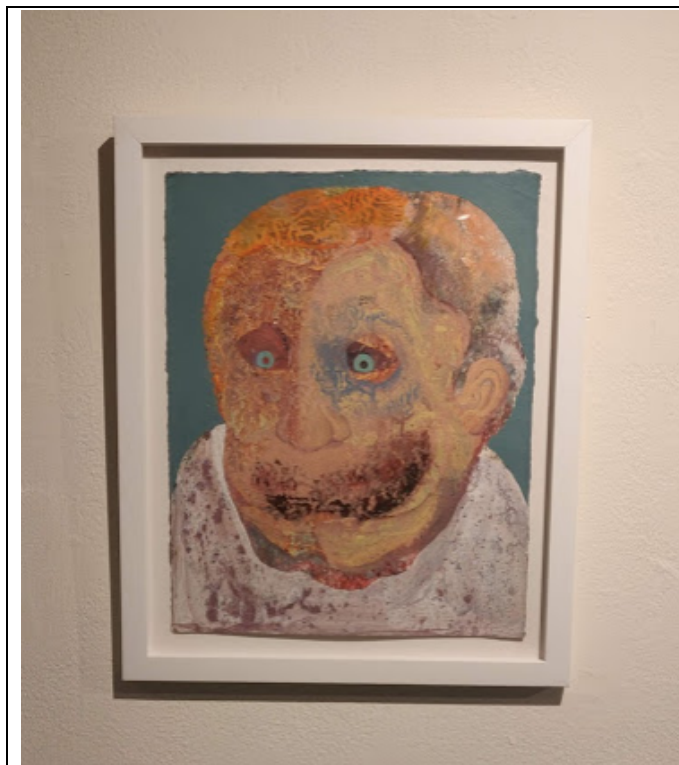




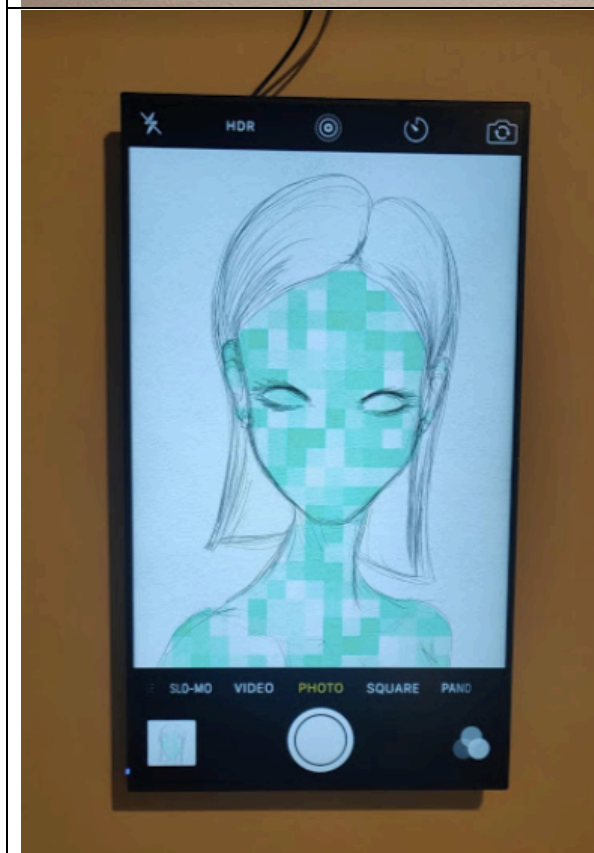
**Abigail  
Gunnels,**  
*After Easter,*  
2018, 20 x 24  
inches,  
archival  
inkjet print.



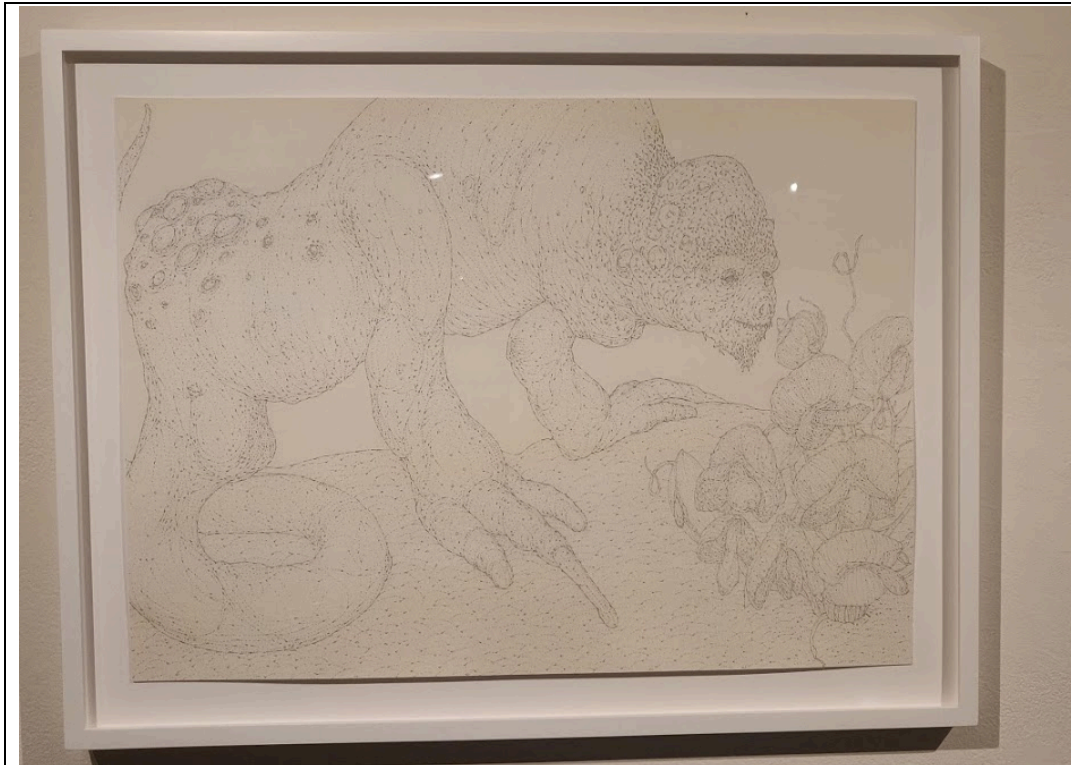
**Timothy  
Hall,**  
*Entablature,*  
2017, 16 x 20  
inches, oil on  
canvas.



**Aaron Johnson,**  
*Friend*, 14 x  
11 inches,  
2017, acrylic  
on paper.



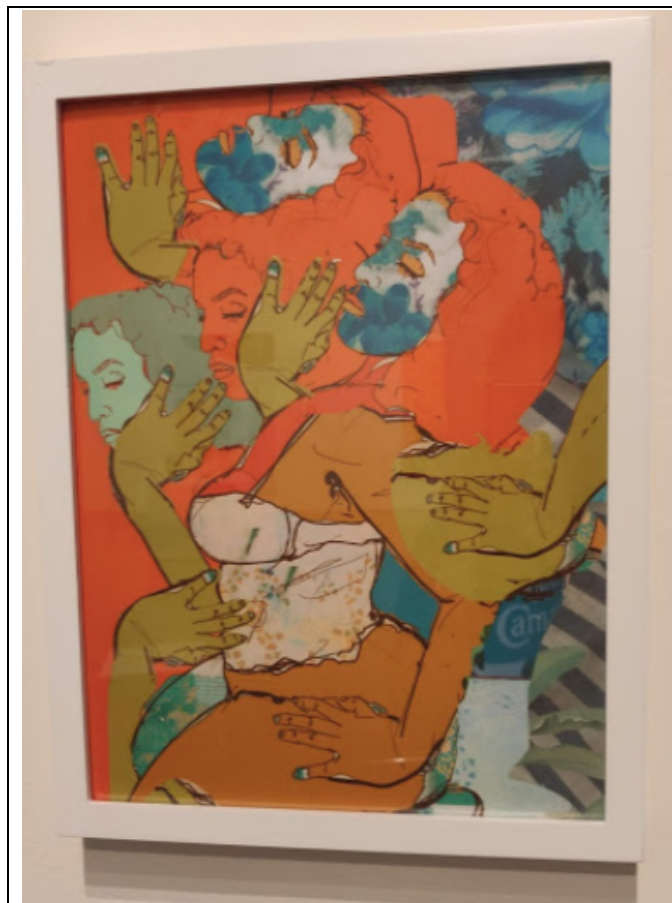
**Christine Mariani,**  
*#mood*, 2019,  
video.



**Sean McCarthy,** *Subtle Scent*, 2011-2018, 18 ½ x 25 inches, ink, water color, and graphite on paper.



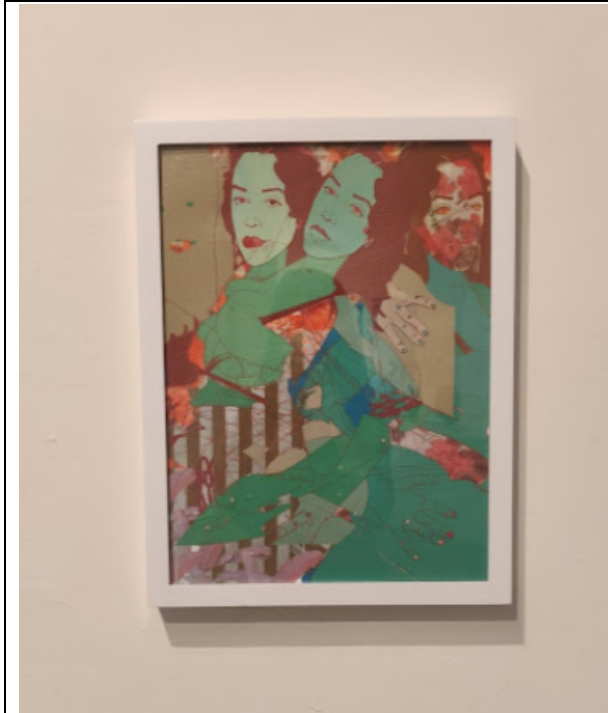
**Tammy Nguyen,** *Atlas Holds the World*, 2017, 24x 36 inches, water color and pastel on paper stretched on panel.



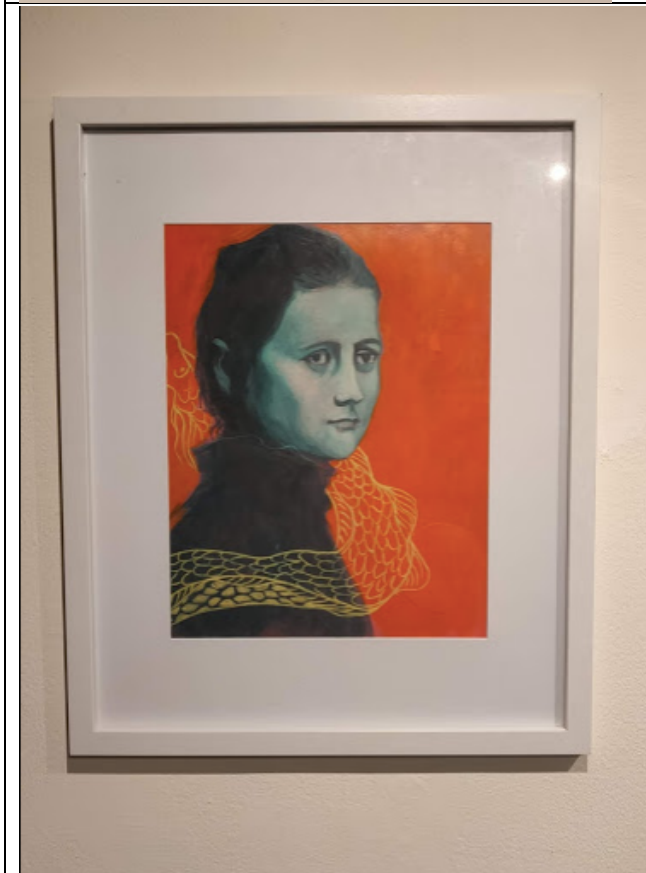
**Ruth Rodriguez,**  
*Carrot Top,*  
Collage, 12 x  
16 inches.



**Ruth Rodriguez,**  
*Sopita con Tijeras,* 2019,  
Collage, 12 x  
16 inches.



**Ruth  
Rodriguez,**  
*Lucha Libre,*  
Collage, 12 x  
16 inches.



**Elizabeth  
Sayles,**  
*Beatrix,*  
2019, 16 x 20  
inches,  
acrylic on  
wood panel.



**Elizabeth Sayles,**  
*Umbrellas,*  
2019, 16 x 20  
inches,  
acrylic on  
Yupo paper,  
and acetate.



**Elizabeth Sayles,**  
*Blue Alice,* 2019,  
16 x 20  
inches,  
acrylic on  
wood panel.



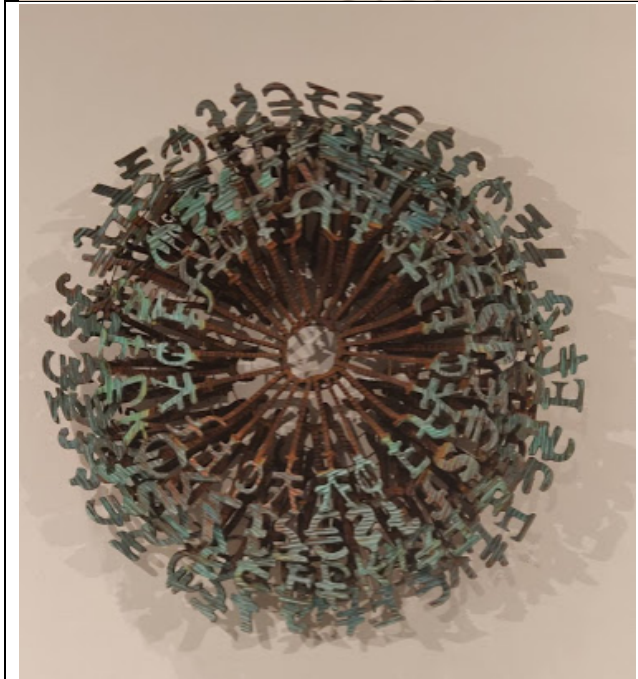
**David Schwittek,**  
*Luchadores Fantasmales (Ghost Fighters),*  
2018, 57 x 18 inches, fiber.



**David Schwittek,**  
*Milpa,* 2018,  
82 x 76 inches, fiber.

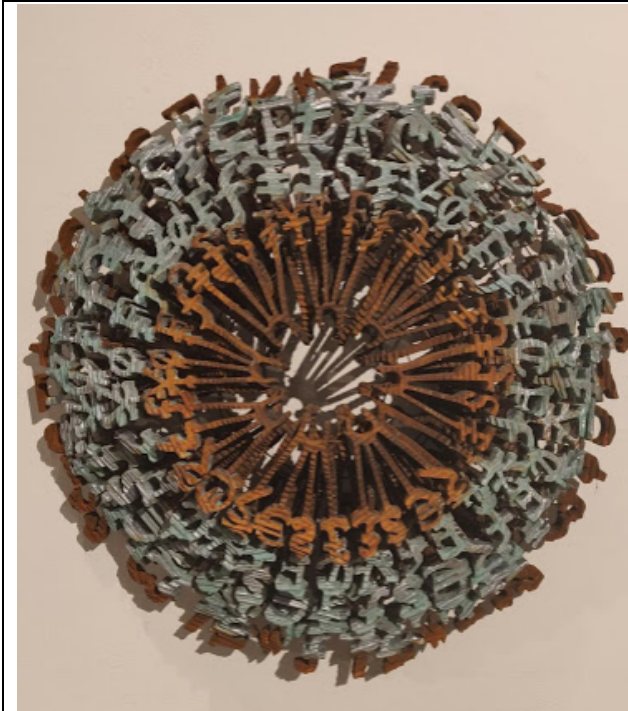


**Charles Seplowin,**  
*Star*, 2019,  
23 x 23 x 6  
inches,  
Styrofoam  
and mixed  
media.



**Charles Seplowin,**  
*Money Wheel*, 2019,  
23 x 23 x 6  
inches,  
Styrofoam  
and mixed  
media.





**Charles Seplowin, *An Eye for Finance*, 2019, 23 x 23 x 8 inches, Styrofoam and mixed media.**



**Janet Skolnik, *Basket* (center), 2019, 24 x 14 x 14 inches, stoneware with celadon glaze.**



**Janet Skolnik,**  
*High Footed Vessel* (1 o'clock), 2019, 15 x 6 x 6 inches, white stoneware.



**Janet Skolnik,**  
*Untitled Vessel* (5 o'clock), 2019, 12 x 7 x 7 inches, white stoneware, celadon glaze.



**Janet Skolnik,**  
*Covered Jar,*  
2019, 7 x 4 x  
4 inches,  
white  
stoneware,  
celadon  
glaze.



**Janet Skolnik,**  
*Untitled*  
*vessel,* 2019,  
12 x 16  
inches, white  
stoneware,  
celadon  
glaze.



**Janet Skolnik,**  
*Black and White Bowl*  
(center),  
2019, 13  
inches x 5  
inch  
diameter,  
stoneware.



**Janet Skolnik,**  
*Black on White* (11 o'clock),  
2019,  
13 x 4 ½ x 4 ½,  
stoneware



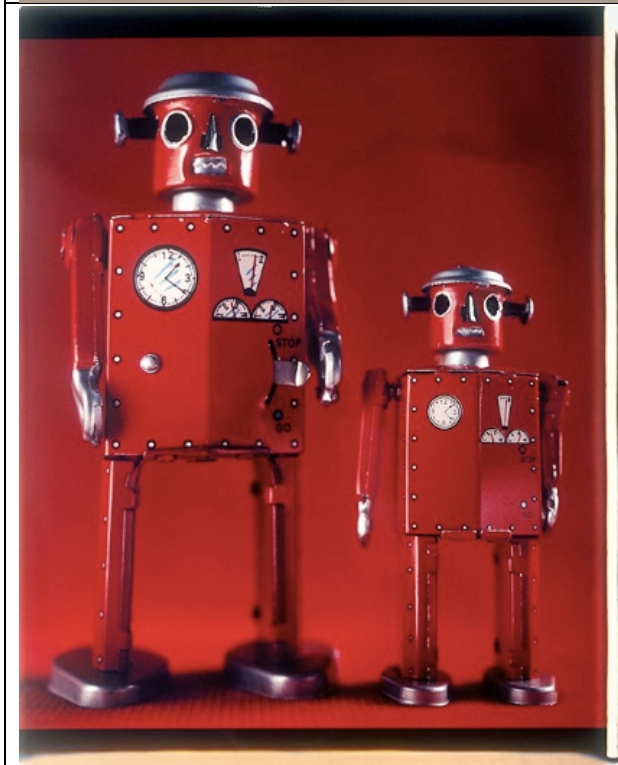
**Janet Skolnik,**  
*Homage to Mondrian #1*  
(2 o' clock),  
2019, 15 x 12  
x 12,  
stoneware.



**Janet Skolnik,**  
*Homage to Mondrian #2*  
(8 o' clock),  
2018, 12 x 8  
x 8,  
porcelain.



**Dannielle Tegeder,**  
*Suite of the Mechanical Language,*  
2016-2019,  
96 x 60 inches,  
acrylic on canvas.



**Terry Towery,**  
*Robot Father and Son,*  
2002, 24 x 20 inches,  
large format polaroid.



**Terry Towery,**  
*Robot Couple with Wrench,*  
2002, 24 x 20 inches, large format polaroid.



**Terry Towery,**  
*Rover the Robot Dog,*  
2002, 24 x 20 inches, large format polaroid.

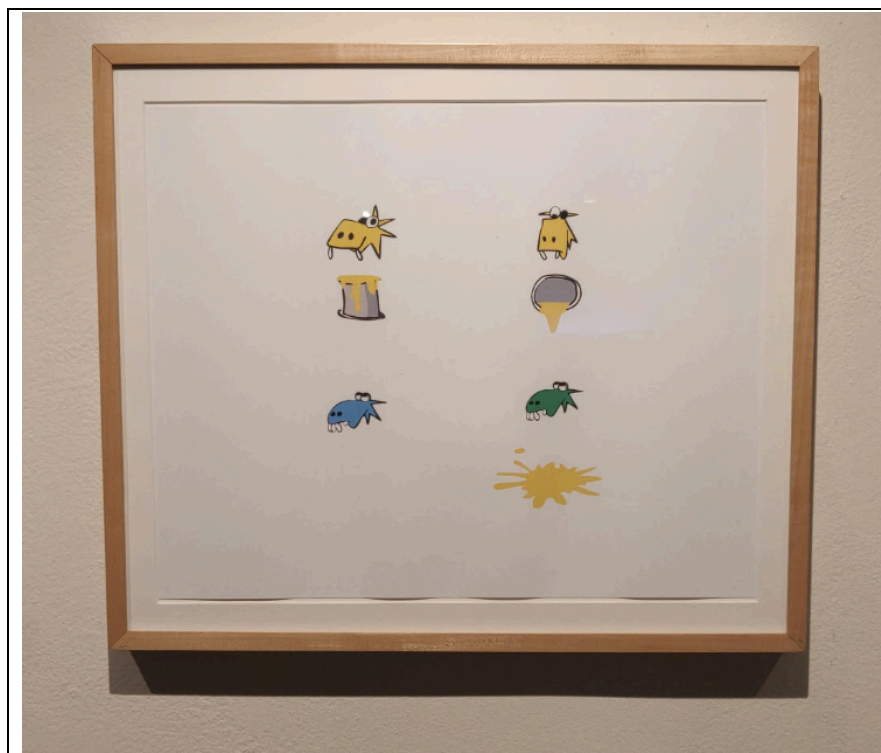


**Terry Towery,**  
*Machine Man*, 2002,  
24 x 20  
inches, large  
format  
polaroid.

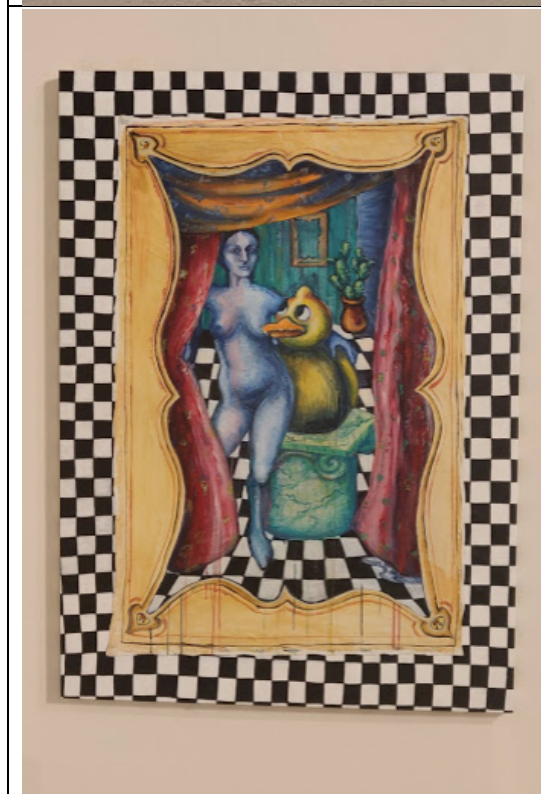


**Robert Wurzburg,**  
*PHEWAAH!*  
*The air horn*  
*echoed*  
*through the*  
*glen.*, 2018,  
14 x 18  
inches, soft  
lead pencil  
and water  
color.





**Robert Wurzburg,**  
*Dogsharks*  
*Yellow + Blue + Green,*  
2019, 14 x 18 inches, vector graphic.



**Andrea Zakin,** *Selfie-Portrait IV,*  
2019, 64 x 46 inches, acrylic on linen.