

SOURCE MATERIAL
Checklist



Pavel Acosta
Portrait of a Woman, by Rembrandt van Rijn
(Dutch, Leiden 1606–1669 Amsterdam), 2014
From the series *Stolen from the Met.*
Dry paint on Sheetrock
48 x 48 inches
Courtesy of the artist



Amelia Biewald
Beware the Children... (After Bouguereau)
Bleach on velvet, upholstery
acrylic, resin and wood
44 x 30 x 6 inches
Courtesy of the artist and Magnan Metz Gallery



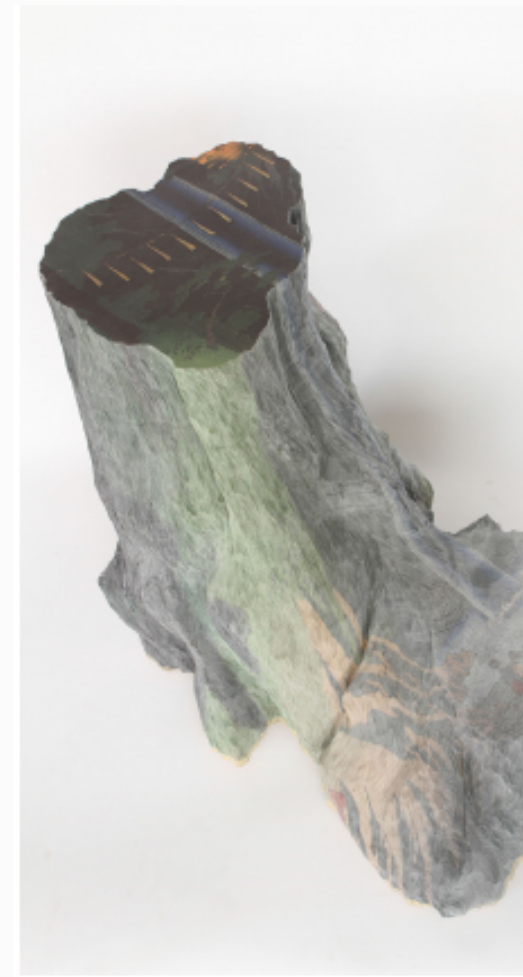
Amelia Biewald
Two Little Girls From Little Rock, 2006 (diptych)
Graphite, gouache, paper, wood,
resin, and aluminum
19 x 14 inches each
Courtesy of the artist and Magnan Metz Gallery



Ignacio Lang
Reconquista, 2005
Cotton KKK robe, acrylic th
body form, mirror mas
62 x 38 inches
Courtesy of James Sokol and Ly



Kirsten Hassenfeld
Star upon Star, 2011
paper with mixed media
48 x 63 x 63 inches
Courtesy of the Artist



Miler Lagos
Fudo Falls, Oji, 2013
Piled and carved paper
23 3/4 x 24 x 18 inches
Courtesy of Magnan Metz Gallery



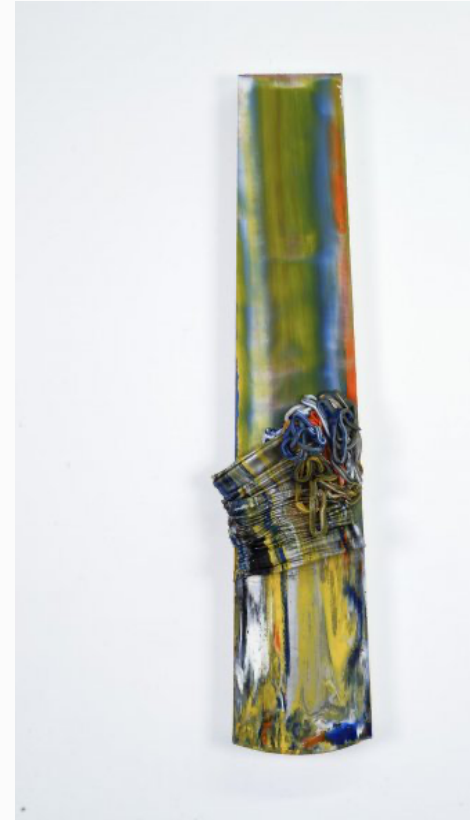
Miler Lagos
Plum Garden, Kamata, 2013
Piled and carved paper
32 3/4 x 26 x 17 1/2 inches
Courtesy of Magnan Metz Gallery



Arnaldo Morales
Torpétalo No. 04, 2000
Assembled industrial materials
80 x 32 x 78 inches
Courtesy of the artist
Photo by Gregory R. Sta...



Susana Solano
***Ombra mai fu*, 2012-2013**
galvanized iron
dimensions variable
Courtesy of Jack Shainman Gallery



Leslie Wayne
***Untitled (Snakecharmer)*,**
oil on panel
34 x 7 x 3 1/2 inches
Courtesy of Jack Shainman

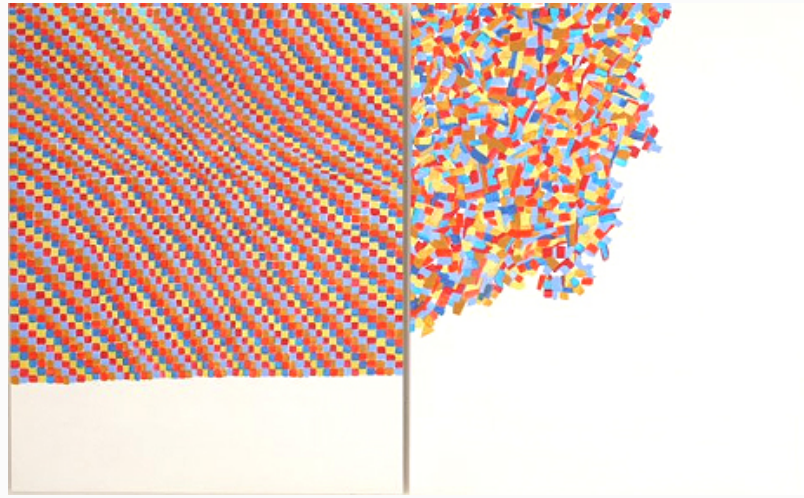


Leslie Wayne
***Untitled (Siennamarble)*, 2013**
oil and roofing nail on panel



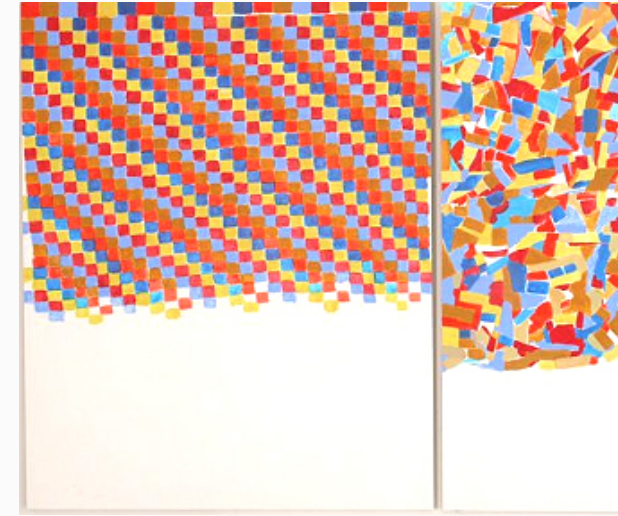
Leslie Wayne
***Untitled (Pinkblackpuce)*,**
oil on panel

34 x 7 x 4 inches
Courtesy of Jack Shainman Gallery

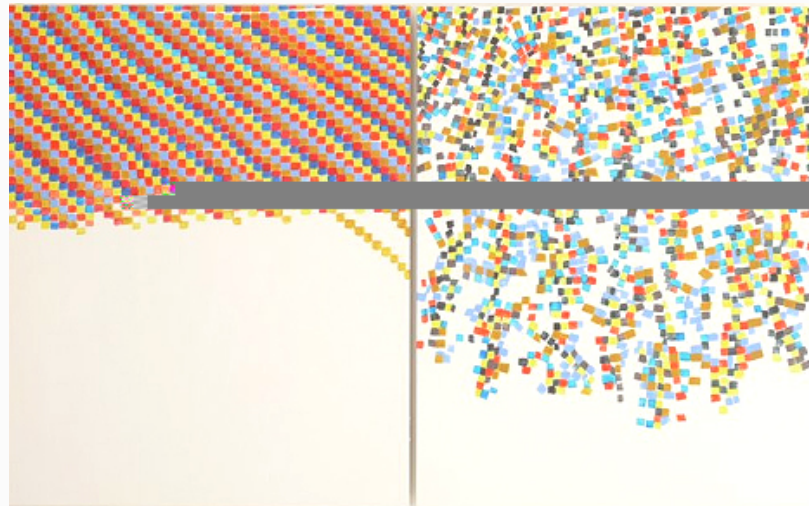


Marjorie Welsh
From the Series *Before After Oaths # 1*, 2012-2013 (diptych)
acrylic on gessoed panel
20 x 16 inches each panel
Courtesy of the artist

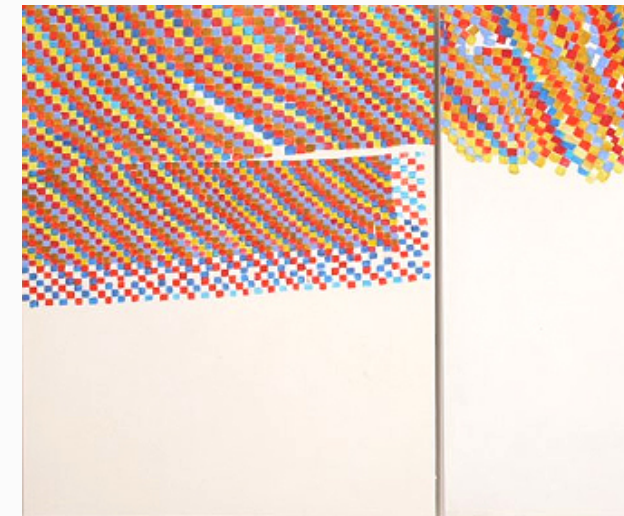
34 x 7 x 2 3/4 inches
Courtesy of Jack Shainman Gallery



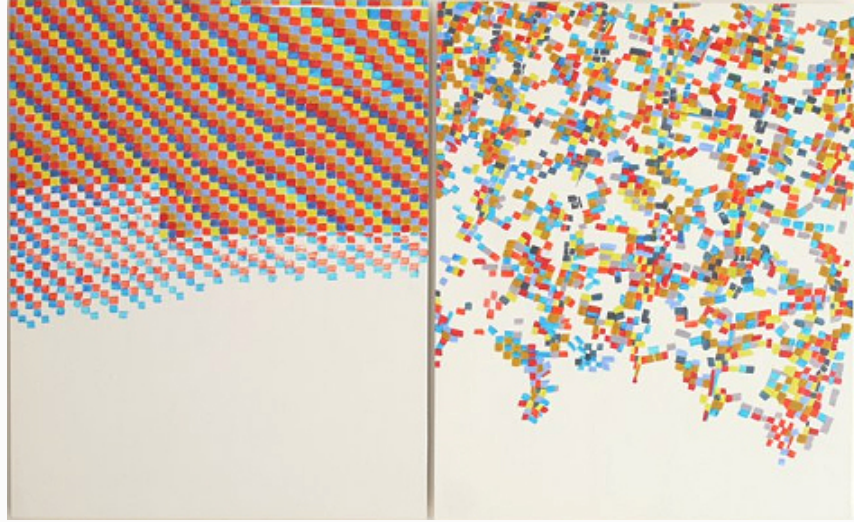
Marjorie Welsh
From the Series *Before After Oaths # 2*, 2012-2013 (diptych)
acrylic on gessoed panel
20 x 16 inches each panel
Courtesy of the artist



Marjorie Welsh
From the Series *Before After Oaths # 3*, 2012-2013 (diptych)
acrylic on gessoed panel
20 x 16 inches each panel
Courtesy of the artist



Marjorie Welsh
From the Series *Before After Oaths # 4*, 2012-2013 (diptych)
acrylic on gessoed panel
20 x 16 inches each panel
Courtesy of the artist



Marjorie Welish
From the Series *Before After Oaths* # 5, 2012-2013 (diptych)
acrylic on gessoed panel
20 x 16 inches each panel
Courtesy of the artist



Marjorie Welish
From the Series *Before After Oaths* # 6, 2012-2013 (diptych)
acrylic on gessoed panel
20 x 16 inches each panel
Courtesy of the artist



Allan Wexler
***Rock Bottom*, 2014**
hand-worked inkjet prints on panel
31 3/4 x 39 3/4 inches
Courtesy of Ronald Feldman Fine Arts, New York



Allan Wexler
***Engagement*, 2012**
hand-worked inkjet prints on panel
31 3/4 x 39 3/4 inches
Courtesy of Ronald Feldman Fine Arts, New York



Allan Wexler
***Pour*, 2012**
hand-worked inkjet prints on panel
31 3/4 x 39 3/4 inches



Allan Wexler
***Earth Work*, 2012**
hand-worked inkjet prints on panel
29 x 37 inches



Allan Wexler
Rift, 2013
hand-worked inkjet prints on panel
31 3/4 x 39 3/4 inches
Courtesy of Ronald Feldman Fine Arts, New York



Allan Wexler
Photographic Props, 2013
Plaster, thread, cardboard and wood
4 1/2 x 6 x 5 inches
Courtesy of Ronald Feldman Fine Arts, New York



Susan Chrysler White
Zoopsia, 2014
Acrylic on plexiglas, lanyard
144 x 70 inches diameter

250 Bedford Park Boulevard West • Bronx, N.Y. 10468-1589 • 718-960-8731 • fax 718-960-8732
Gallery hours: Tuesday to Saturday from 10:00 am - 4:00 pm