

Sugar Buzz

Becca Albee

Untitled (spiral cakes), 1998 - 2007
cakes
9 x 10 feet
Courtesy of the artist

Untitled (hula hoop), 1998
plastic hula hoop with vanilla icing
45 x 45 x 45 inches
Courtesy of the artist



Becca Albee, *Untitled (spiral cakes)*, 1998

Julie Allen

Trio, 2003
balloons and thread
10 x 7 1/2 x 6 1/2 inches
Courtesy of McKenzie Fine Art

The Wedding Cake, 2002
balloons and thread
10 x 13 x 10 inches
Courtesy of McKenzie Fine Art



Julie Allen, *Trio*, 2003

John Boone

Taste Suite: Sweet, 2001
gouache, acrylic on Mylar
20 x 25 inches

Taste Suite: Salty, 2001
gouache, acrylic on Mylar
20 x 25 inches

Taste Suite: Bitter, 2001
gouache, acrylic on Mylar
20 x 25 inches

Taste Suite: Sour, 2001
gouache, acrylic on Mylar
20 x 25 inches

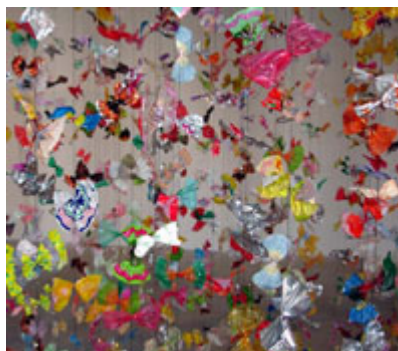
Courtesy of the artist



John Boone *Taste Suite: Sweet*, 2001

Luisa Caldwell

Color Falls, 2006
candy wrappers and thread
21 x 6 x 6 feet
Courtesy of the artist and Florence Lynch Gallery



Luisa Caldwell, *Color Falls*, 2006

Emily Eveleth

Repose, 2006
oil on canvas
72 x 62 inches
Courtesy of the artist and Danese Gallery

Lucy Fradkin

Heading South, 2004

acrylic and gouache on paper with collage and pencil

14 x 13 inches

Courtesy of the artist



Emily Eveleth *Repose*, 2006

Pamela Hadfield

Great Escape, 2006

C-print

51 1/2 x 34 1/2 inches

Bang, 2006

C-print

34 1/2 X 51 1/2 inches

Courtesy of the artist

Maggy Rozycki Hiltner

Summer Wall: Pink Cloud, 2006

hand-stitched cotton

4 x 12 feet

Courtesy of the artist



Lucy Fradkin, *Heading South*, 2004

Rebecca Holland

Long Crush, 2007

crushed cast sugar

dimensions variable

Courtesy of the artist

Yoshiko Kanai

Sugar Table / Communication, 2006

sugar, egg white, metal, glass, tatami mat

27 x 16 x 12 inches (table)

80 x 30 x 14 inches (table on tatami mat)

Courtesy of the artist

Jenny Kanzler

Infection, 2006

oil on wood panel

9 1/4 x 13 inches

Courtesy of the artist Jenny Kanzler

Growth, 2005

oil on wood panel

10 x 8 inches

Courtesy of the artist, collection of Victoria Barnes & Tim Conte

Tonsillitis, 2006

oil on wood panel

12 x 7 1/4 inches



Pamela Hadfield, *Great Escape*, 2006

Courtesy of the artist

Mary Magsamen and Stephan Hillerbrand

Air- Hunger, 2003

video

dimensions variable

Courtesy of the artist

Mark McLeod

Whitney, 2006

cast and caramelized Splenda and sugar
14 x 14 inches

Metropolitan, 2006

cast and caramelized Splenda and sugar
14 x 14 inches

Guggenheim, 2006

cast and caramelized Splenda and sugar
14 x 14 inches

Louvre, 2006

cast and caramelized Splenda and sugar
14 x 14 inches

Courtesy of the artist

Amy Williamson Miller

I Do, 2006

mixed media
8 feet diameter

Courtesy of the artist

Shelley Miller

Pipe Dreams (Canada), 2001

digital print
16 x 20 inches, 20 x 29 inches, 16 x 20 inches

Sugar Coating (Brazil), 2006

digital print
48 x 36 inches each

Courtesy of the artist

Tracy Miller

Lime Whip, 2000

oil on canvas
72 x 60 inches

Tiny Bubbles, 2004

oil on canvas
72 x 60 inches

Courtesy of the artist and Feature Inc.

Matthew Neff

"La morte equise" Sugar Chandelier,
2006

sugar on Arches 88, silkscreen
15 x 22 inches

*I wear black on the outside because
black is how I feel on the inside*, 2006

sugar on Arches 88, silkscreen
15 x 22 inches

Courtesy of the artist



Maggy Rozycki Hiltner, *Summer Wall: Pink Cloud*, 2006



Rebecca Holland, *Long Crush*, 2007



Jenny Kanzler, *Tonsillitis*, 2006



Yoshioko Kanai, *Sugar Table/Communication*, 2006

Gina Occhiogrosso

Yellow into Pink, 2003
acrylic on canvas
16 x 20 inches

Green into Yellow, 2003
acrylic on canvas
16 x 20 inches

White into Yellow, 2003
acrylic on canvas
16 x 20 inches

Courtesy of the artist

Lynda Ray

Primal Ground, 2005
encaustic
8 x 8 inches

Tier, 2005
encaustic
8 x 8 inches

Square Harmony, 2005
encaustic
8 x 8 inches

Dark Fired, 2005
encaustic
8 x 8 inches

Courtesy of the artist

Freddy Rodriguez

Our Man: Homage to Sammy Sosa, 2003
glass and sugar
8 x 1 x 1 feet, bat: 32 1/4 x 2 3/4 inches
Courtesy of the artist

Milton Rosa-Ortiz

Gula, 2004
sugar cubes, monofilament, seed beads,
support structure
18" diameter x 30 inches high
Courtesy of the artist

Jessica Edith Schwind

Love Peddler II, 2005
diptych, C-print mounted on aluminum
20 x 26 inches each
Courtesy of the artist

Karen Shaw

Cosmic Commodities, 2000
mixed media
17 1/2 x 30 x 13 inches
Courtesy of the artist

Dana K. Sherwood

Confektion, 2005
ink, gouache, cake, insects



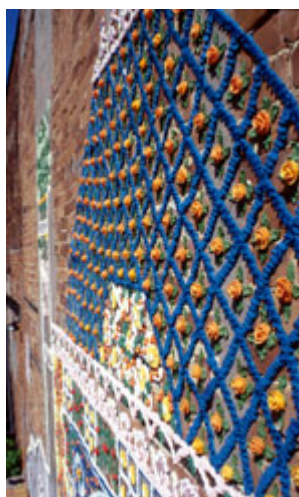
Mary Magsmen & Stephan Hillerbrand, *Air Hunger*, 2003-04



Mark McLeod, *Whitney, Guggenheim*, 2006



Amy Miller, *I Do*, 2006



Shelley Miller, *Pipe Dreams (Canada)*, 2006

13 x 19 1/2 x 2 1/2
Courtesy of the artist

Sara Sill

Abundance I and II, 2006
acrylic on canvas
30 x 42 inches
Courtesy of the artist

Vadis Turner

Yuck, 2006
mixed media
60 x 96 x 3 inches

Confection Collection, 2006
mixed media
60 x 96 x 3 inches
Courtesy of the artist

Andy Yoder

Pipe, 2007
38 x 22 x 87 inches
styrofoam, silicone and licorice
Courtesy of the artist and Winkleman /
Plus Ultra Gallery



Matthew Neff, "La morte equise" Sugar Chandelier, 2006



Tracy Miller, *Tiny Bubbles*, 2004



Gina Occhiogrosso, *White into Yellow, Green into Yellow*, 2003



Lynda Ray, *Primal Ground*, 2005



Freddy Rodriguez, *Our Man*, 2003



Milton Rosa-Ortiz, *Gula*, 2004



Jessica Edith Schwind, *Love Peddler II*, 2005



Karen Shaw, *Cosmic Commodities*, 2006



Dana K. Sherwood, *Confektion "The Sweet Allure of Entrapment"*, 2005



Sara Sill, *Abundance I* detail, 2006



Vadis Turner, *Cupcakes*, 2006



Andy Yoder, *Pipe*, 2007