



**SURPRISINGLY  
NATURAL: THE NATURE  
OF THE BRONX**

**BRONX RIVER ART CENTER**  
**September 12–October 18, 2008**

Mac Carbonell & Luke Stettner,  
Jason Falchook, Bettina Johae,  
Holly Lynton, Laura Napier,  
Katherine Radke, Yumi Janairo Roth,  
Benjamin Swett

**LEHMAN COLLEGE ART GALLERY**  
**September 9–December 15, 2008**

Daniel Hauben, Lawrence Lederman,  
Margaret Moulton, Travis Roozée,  
Robert Stephenson, Rebecca Swanson

**WAVE HILL**

**September 9–November 30, 2008**

Lawrence Beck, Steven Day, N.W. Gibbons,  
David Gillison & Bob Schneider,  
Todd Martin, Leah Oates, Christine Osinski,  
Patrick Perry, Eric Slayton, Ron Terner

Lawrence Lederman,  
*Winter in the North*  
Bronx, 2008



## EXHIBITION RECEPTIONS

Friday, September 12, 6–9pm, Bronx River Art Center

Sunday, September 14, 1–4pm, Wave Hill

Tuesday, October 7, 6–7:30pm, Lehman College Art Gallery

## EXHIBITION-RELATED PUBLIC PROGRAMS

Fridays, September 12, 19, 26,  
October 17, 24, 31, 10am–1pm

### ART WORKSHOP:

#### NATURE PHOTOGRAPHY SERIES—SESSION 1

Benjamin Swett teaches creative techniques through outdoor shooting assignments at Wave Hill.

*6-session fee: \$105 Member; \$135*

*Non-member. Single session fee:*

*\$20 Member; \$30 Non-member.*

*Registration required; call*

*718.549.3200 x305. Meets at*

*Wave Hill.*

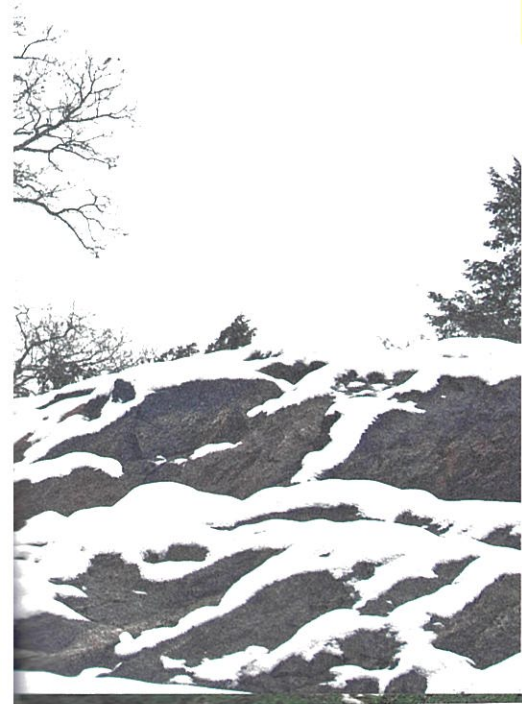
Saturday, Sunday,  
October 4, 5 3:30pm

### PHOTOGRAPHER TALKS

Exhibiting artists talk about their approaches to photographing in the borough. *Meets at Wave Hill.*

Thursday, October 16,  
12:15–1:30

Artists from the exhibition will talk about their work as part of the City and the Humanities Series. *Free of charge. Meets at Lehman College Art Gallery.*





**Saturday, October 18, 11am–3pm**  
**ART AND NATURE TROLLEY TOUR:**  
**THE NATURE OF THE BRONX**

The Bronx Culture Trolley transports participants from Wave Hill to Lehman College Art Gallery and the Bronx River Art Center, to meet artists and curators. Stop at Van Cortlandt Park, where naturalist and author Leslie Day highlights the diversity of the borough's natural landscape.

*Limited registration. \$25 Member; \$35 Non-member. Registration required; call 718.549.3200 x305. Meets at Wave Hill.*

**EXHIBITION TOURS AT WAVE HILL**  
Thursdays, 12pm | Saturdays, 2:15pm



Bettina Johae, *borough edges, nyc - bx\_0180*  
*pelham bay park, the bronx, 2004*

Benjamin Swett, *Royal Paulownia, 7.5"*  
*Hutchinson River, May 8, 2002., 2002*



cover, clockwise from top:

Katherine Radke,  
*Bronx woods*, 2008

Lawrence Beck,  
*Thicket XXV*, 2004

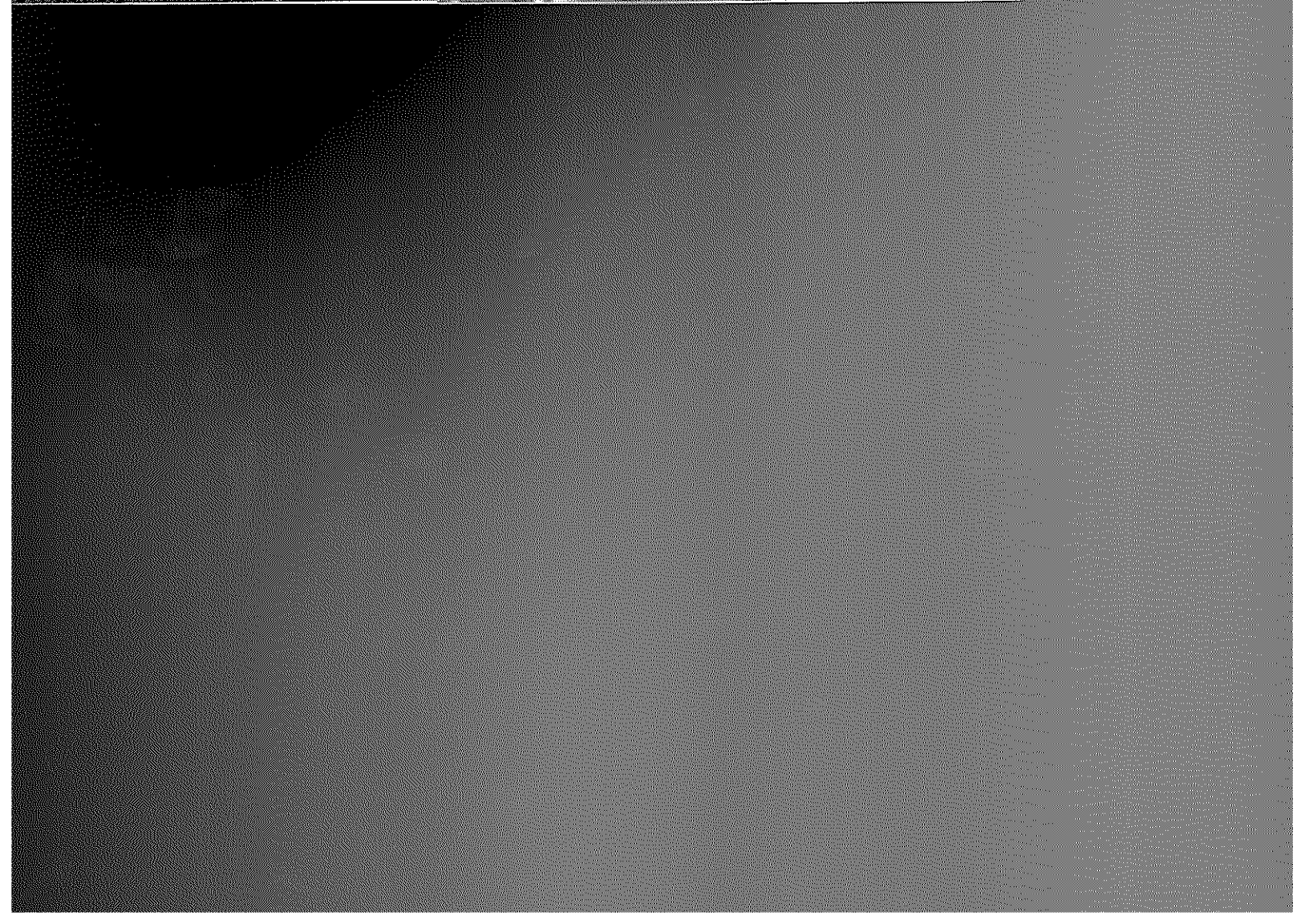
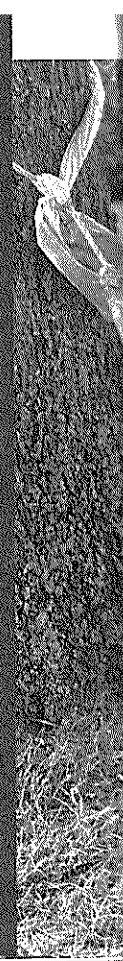
Margaret Moulton,  
*Untitled (Wave Hill Beech  
Shadow)*, 2003



Steven Day, Crotona  
Park (baseball field)  
Bronx, 2008



Christine Osinski,  
*Couple in Hammock*,  
Hunter Island, 2003



Travis Roazée, View of  
the Hudson River from  
Palisade Avenue, 2008

All venues are easily accessible  
by public transportation. Visit  
each website for directions,  
hours, and admission.



**BRONX RIVER ART CENTER**  
1087 East Tremont Ave.  
Bronx, NY 10460  
718.589.5819  
[www.bronxriverart.org](http://www.bronxriverart.org)



**LEHMAN COLLEGE ART GALLERY**  
Bedford Park Blvd. West  
Bronx, NY 10468-1589  
718.960.8731  
[www.lehman.edu/gallery](http://www.lehman.edu/gallery)



**WAVE HILL**  
675 West 252nd St.  
Bronx, NY 10471  
718.549.3200  
[www.wavehill.org](http://www.wavehill.org)



SURPRISINGLY NATURAL: THE NATURE OF THE BRONX is made possible, in part, with support from the National Endowment for the Arts, and the Lily Auchincloss Foundation, the Milton & Sally Avery Arts Foundation, Target, New York City Department of Cultural Affairs, and the New York State Council on the Arts—a state agency.



THE ARTS AT WAVE HILL ARE SPONSORED BY