

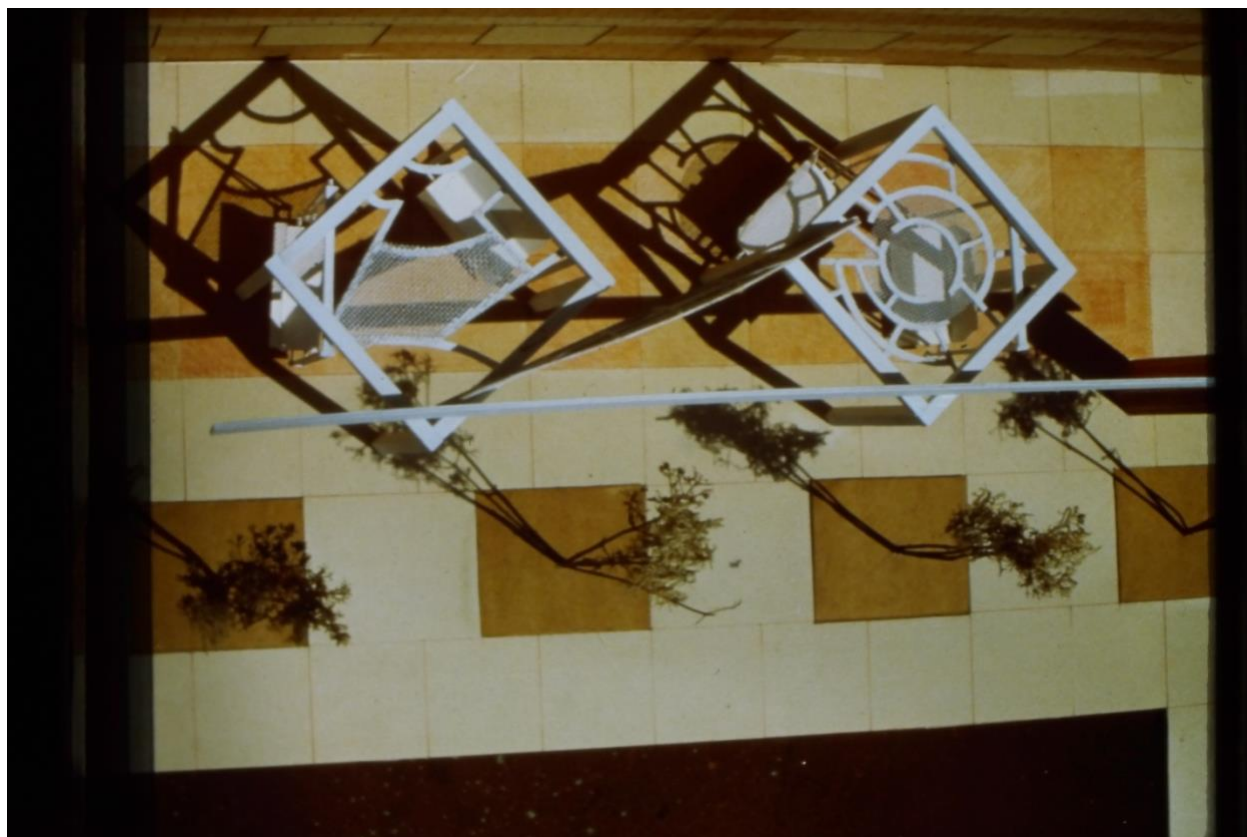
Alice Adams: Public Projects  
February 8, 2000 – April 15, 2000  
Archival Images



Alice Adams  
*Glider Park*, 1990  
Steel pavilions, brick,  
Column and paving,  
Steel glider seats  
11' x 40' x 12'



Alice Adams  
*Glider Park (model)*  
Steel, brick,  
1989-1990



Alice Adams  
*Beaded Circle Crossing*,  
1993-1994  
45' x 75' x 60'



Alice Adams  
*Beaded Circle Crossing*  
1993-1994  
45' x 75' x 60'

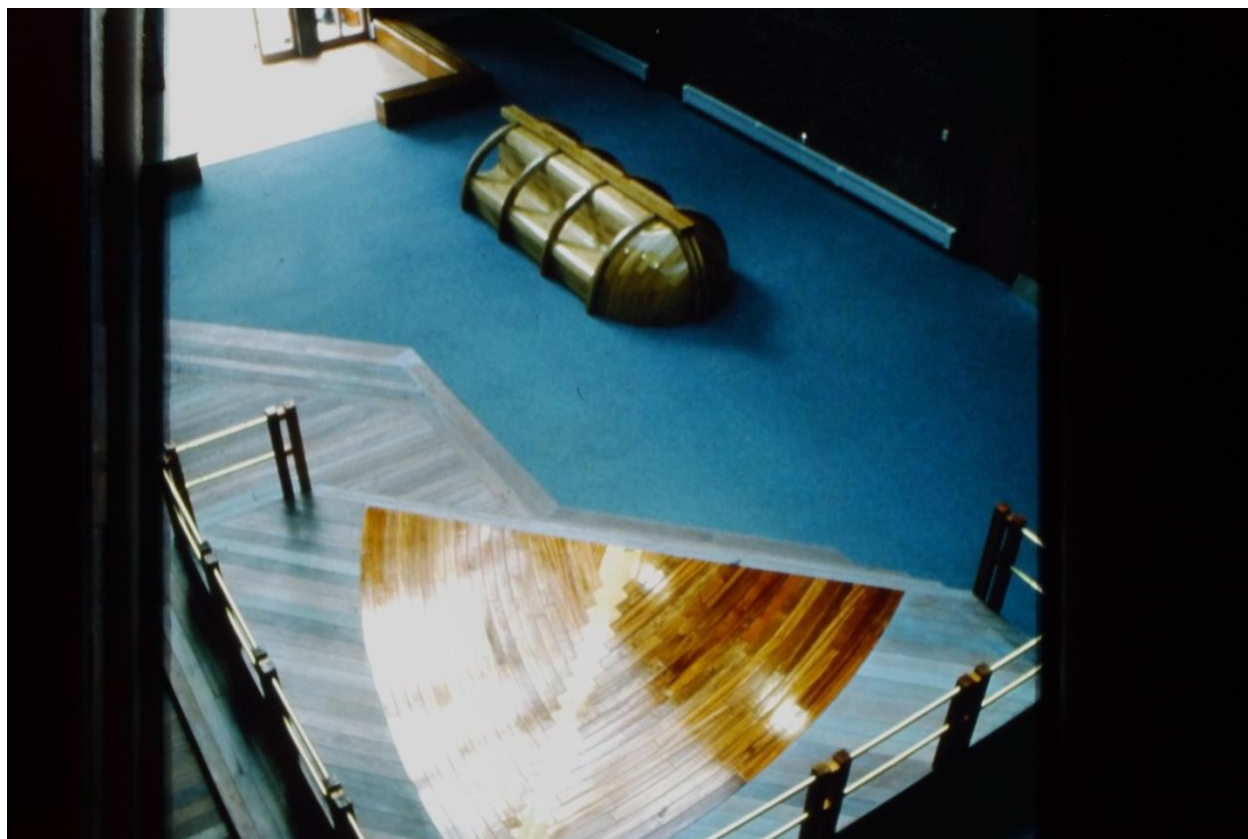




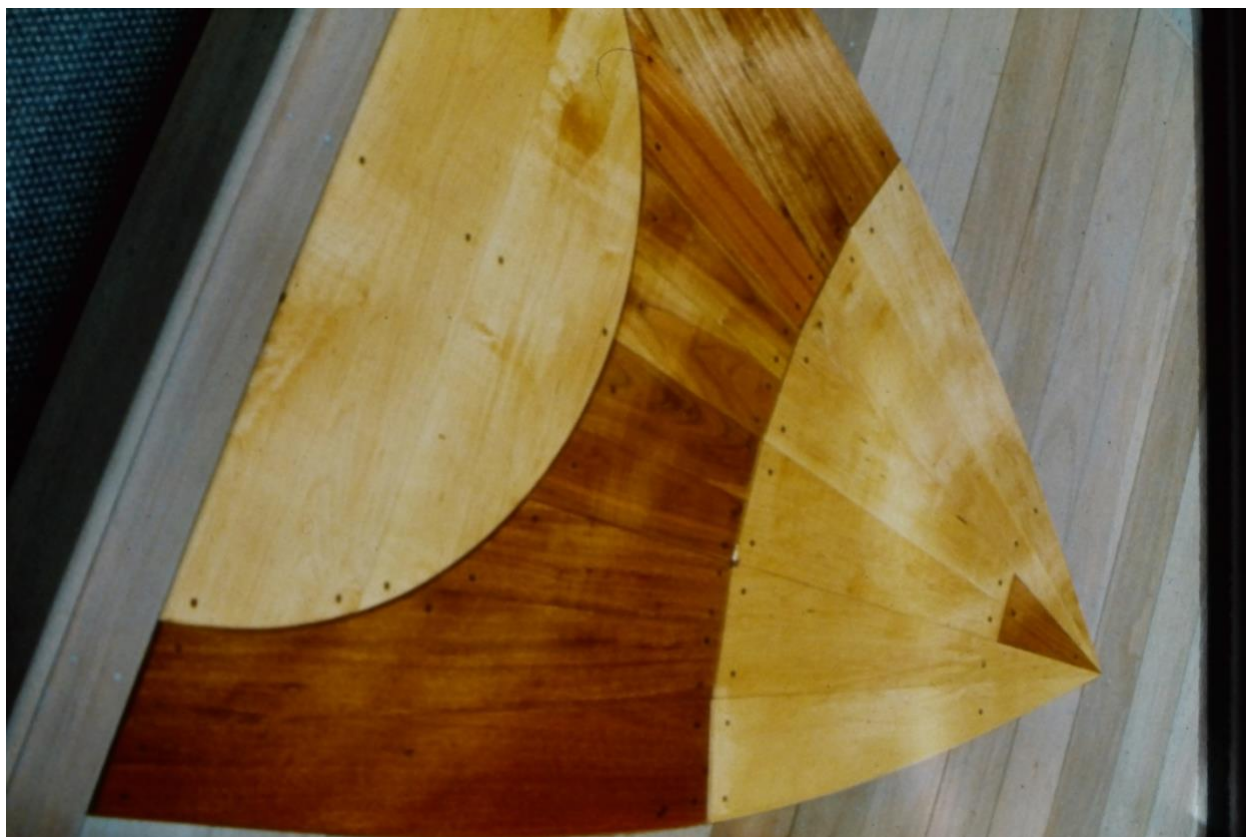
Alice Adams  
*Beaded Circle Crossing*  
1993-1994  
Denver Intern. Airport  
Upper screens and rings



Alice Adams  
*Ronkonkoma*  
195  
LIRR NY  
Planting  
160' x 60' x 130'



Alice Adams  
*The River*  
1993  
Middletown, CT  
38' x 40' x 70



Alice Adams

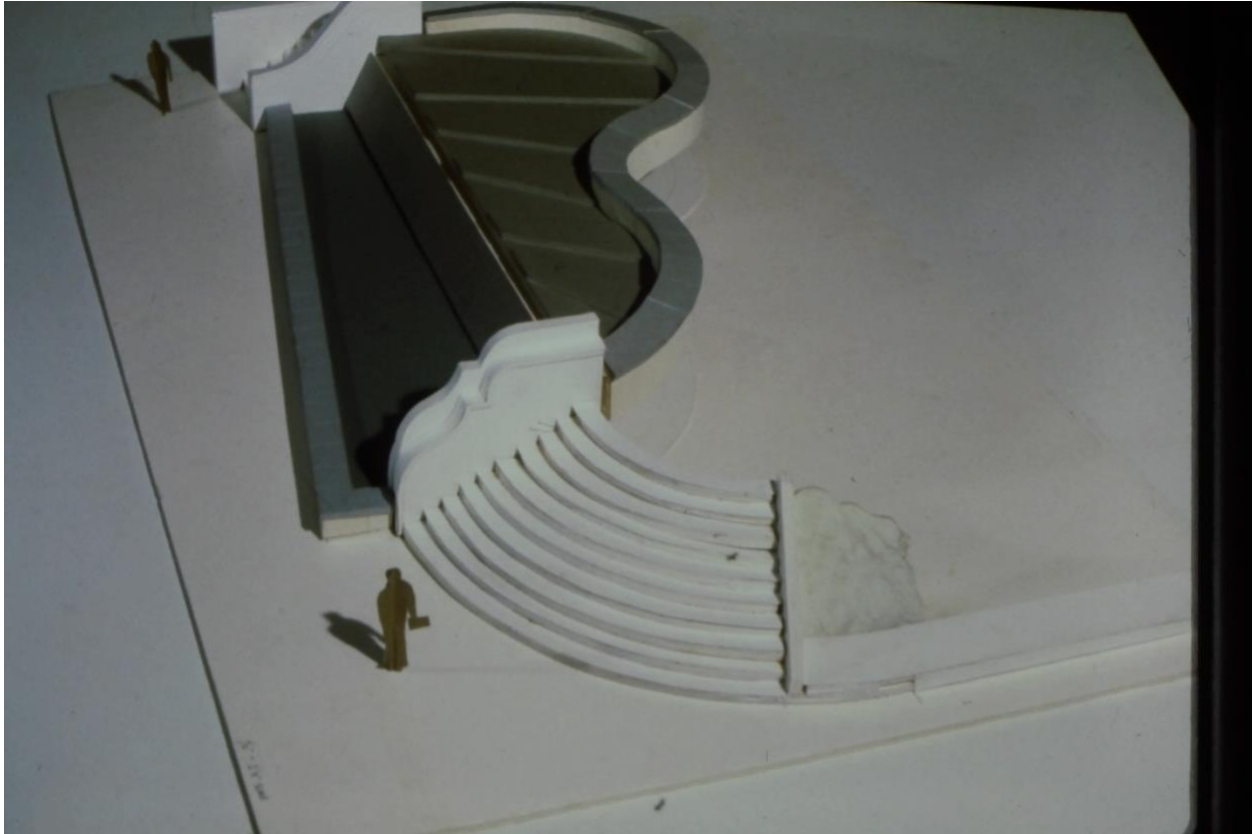
*The River*

Detail: Guide Boat insert in dock/deck





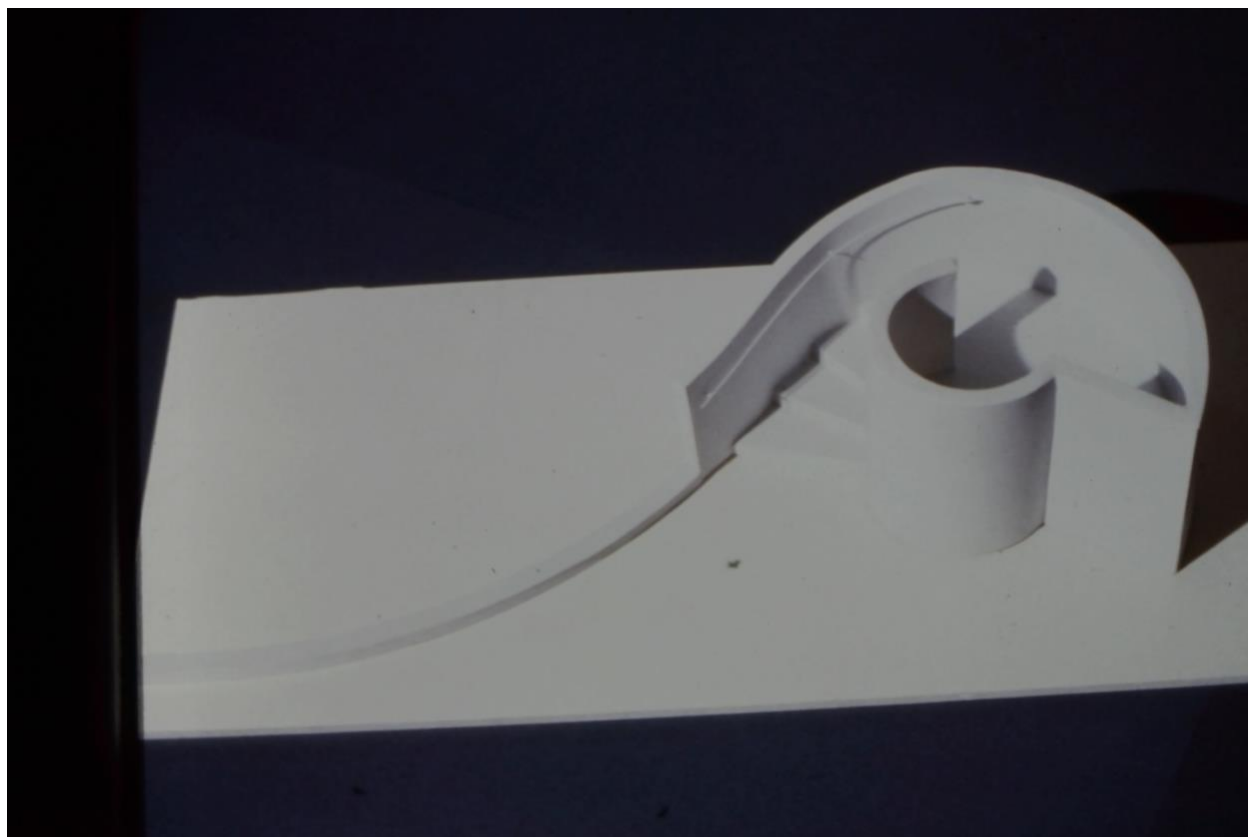
Alice Adams  
*The Roundabout*  
Bluemle Life Science building  
Philadelphia, PA  
216' x 160'



Alice Adams  
*The Roundabout with scale figures*  
Model: Waterwall  
1992



Alice Adams  
*The Roundabout*  
1992  
Podium model



Alice Adams  
*The Roundabout*  
Monticello paving and podium  
1992





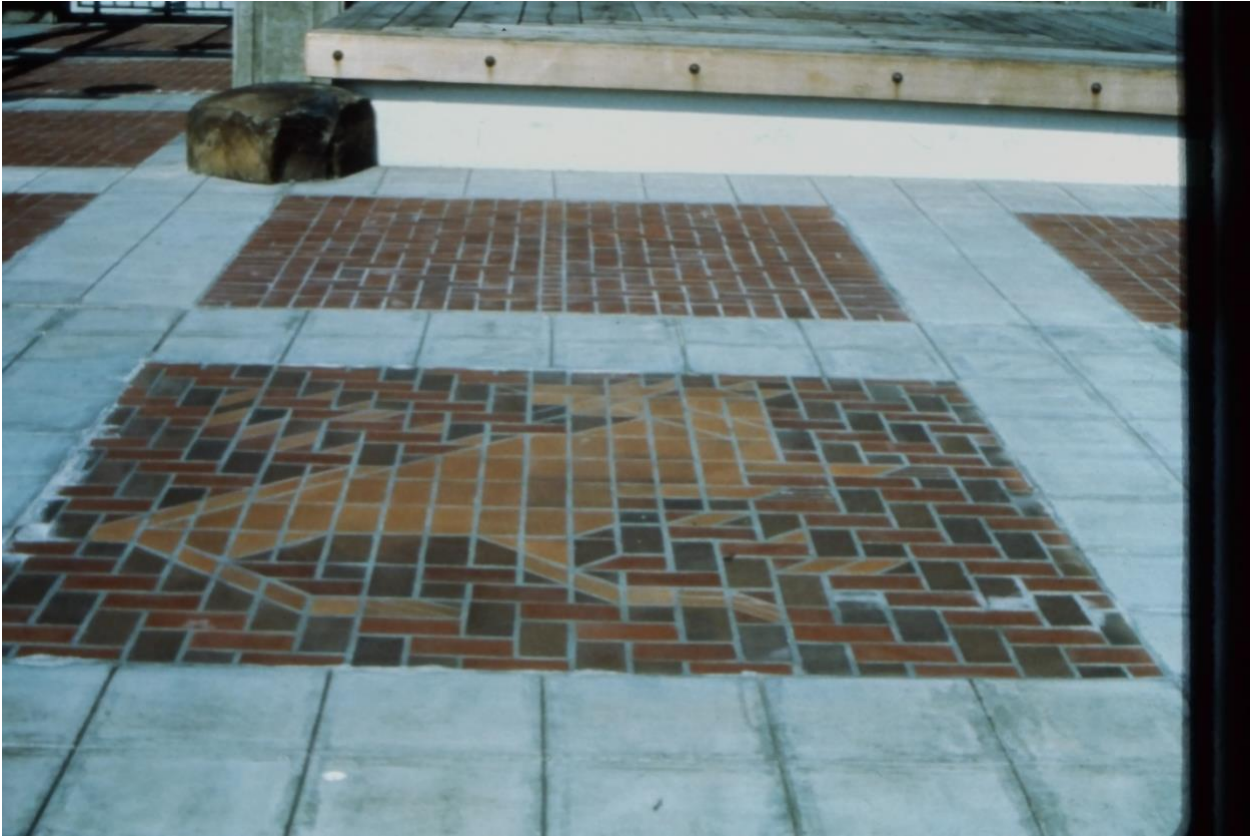
Alice Adams  
*African Garden Ps 12*  
Brooklyn, NY  
1993  
66' x 55'



Alice Adams  
*African Garden Ps 12*  
1993  
Detail Image



Alice Adams  
*Seattle Transit Project*  
1985-1990  
Steel glass, neon marquees, trellises,  
6 lowering vines

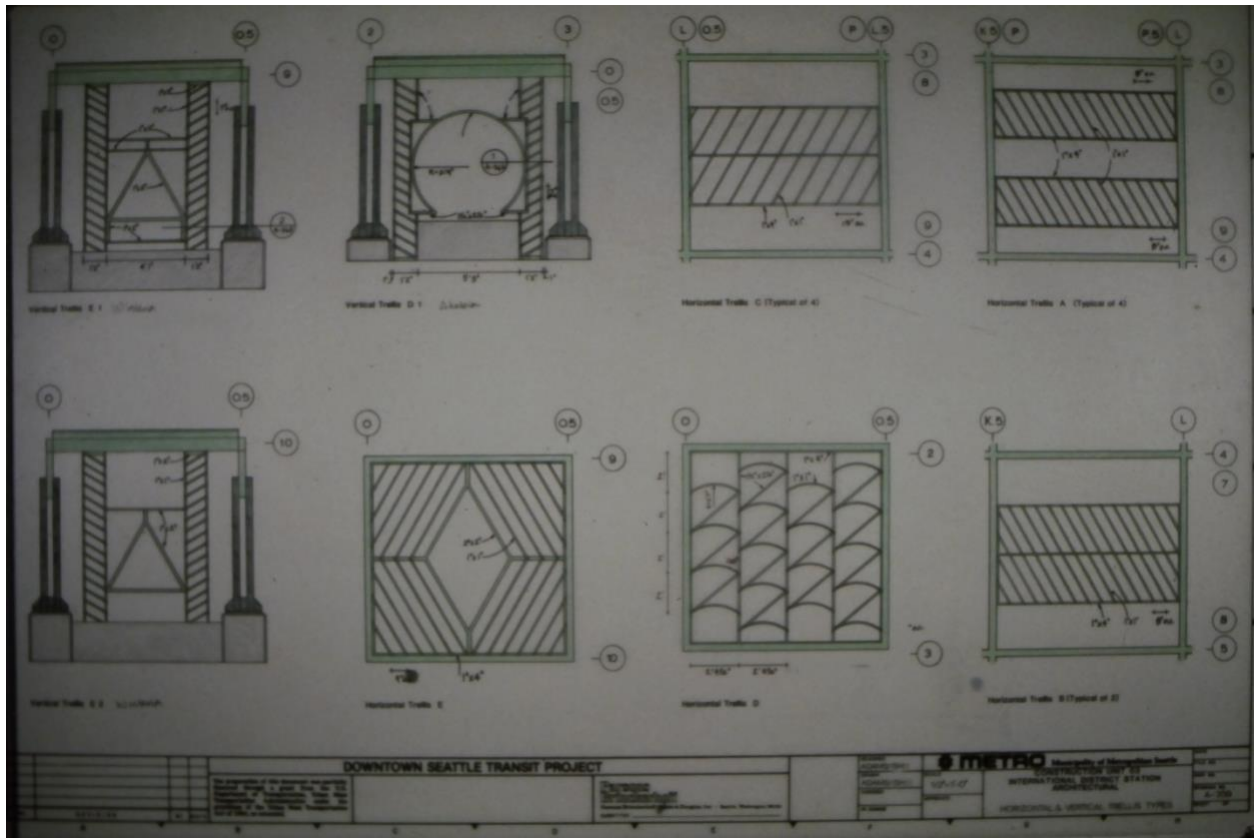


Alice Adams  
*International District Seattle Transit Project*  
1985-1990  
Detail: Stage + Chinese calendar paving





Alice Adams  
*International District Seattle Transit Project*  
1985-1990  
Trellis detail image



Alice Adams  
*International District Seattle Transit Project*  
Construction Drawing  
1985-1990



Alice Adams and Todd Williams/ B. Tsien  
Metro Link St. Louis  
1989-1993  
Concrete and Steel  
Station Canopy