

“Close to Home”

**Exhibition runs through
October 29**

Lehman College Art Gallery

Curated by Susan Hoeltzel

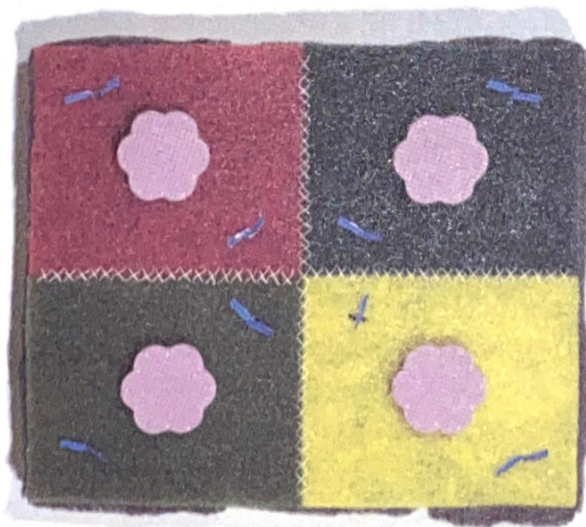
Home. For some, the word evokes the “warm fuzzies.” For others, something more or something less. The mundane routines of everyday life are etched less clearly in our memories than events and activities that are out of the ordinary. We are so caught up with the public sphere, we often overlook the private sphere and the deep meaning it holds for our lives.

This is why a society needs its arts and its artists! They remind us of the touchstones of our humanness. They create opportunities for transformation. The exhibition “Close to Home” draws from a household landscape strewn with scouring pads, twist ties, mops, and unsorted laundry. It disrupts the taken-for-grantedness of our everyday world and marks “homely” objects and everyday rituals with the extraordinary eye and hand of the artist.

—Adapted from the Exhibition Program Essay “Close to Home: An Homage to Hestia” by Patricia J. Thompson, Lehman College professor, author, and feminist theorist



Sally Minter
The High Anxiety Living Room, 1994
Mixed media



Jeanne Tremel
Quilt #1, 1996
Scouring and cosmetic pads,
dental floss, steel wool,
foam, twist ties



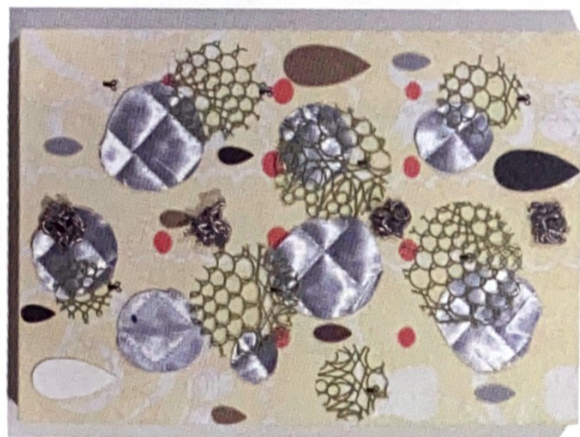
Lisa Hoke
To Tie Knots in the Air, 1992
String weighted by objects



Lisa Hoke
Lifeline, 1992-93
 Sleeves



Ellen Driscoll
Untitled, 1995
 Steel bed, horsehair braid, stone



Jeanne Tremel
Quilt #2, 1996
 Linen tablecloth, plastic doily, waistband hooks,
 fabric, foam, scrubbing pads, ink



Michael Pribich
Untitled, 1992-4
 Mixed media with wheel

The Lehman College Art Gallery presents 20th-century art in the Edith Altschul Lehman Gallery and the Robert Lehman Gallery, two striking exhibition spaces on the first floor of the Fine Arts Building, designed by Marcel Breuer. The Gallery also conducts art education programs in collaboration with Bronx public schools, and is a pioneer in the use of interactive media for the visual arts with projects ranging from the production of a CD rom on Bronx public art to on-line exhibition catalogs to performance art. The Art Gallery's acclaimed on-line journal Talkback! A Forum for Critical Discourse was described by The New York Times as the "electronic ticket for pondering the deeper meaning of the Internet." Art critic Robert Atkins is editor of the quarterly journal; art student Florian Penev designs its home pages.

You can find Talkback!

at <http://math240.lehman.cuny.edu/talkback>

Art Gallery Hours

Tuesday through Saturday 10 a.m. to 4 p.m.

Art Gallery Staff

Susan Hoeltzel, Director

Mary Ann Siano, Associate Director

Phillip Kautz, Education Coordinator

Denise Mediavilla, Assistant to the Director